

# **Community Health Profile Report**

**Effingham County, Illinois**

**April 2017**

## Table of Contents

Section 1.	Demographic and Socioeconomic Characteristics .....	pg. 3
Section 2.	General Health and Access to Care Indicators .....	pg. 13
Section 3.	Maternal and Child Health Indicators .....	pg. 19
Section 4.	Chronic Disease Indicators .....	pg. 23
Section 5.	Infectious Disease Indicators .....	pg. 34
Section 6.	Environmental, Occupational, and Injury Control Indicators .....	pg. 36
Section 7.	Sentinel Events .....	pg. 43

## Section 1. Demographic and Socioeconomic Characteristics

---

Effingham County is a rural community located in the Southeastern portion of Illinois. The county has a total population of 34,332 residents. This is a 0.3% increase in population since 2010. The largest increases in the population were among 65 - 74 year olds, and 55-59 year olds between the 2010 Census and 2015 American Community Survey.

Since 2010, the median age has decreased from 39.2 years to 38.9 years in 2015.

**Table 1.1: Population Characteristics**

Population	2010	2015	Effingham % of population 2015	IL % of population 2015	Percent change since 2010
<b>Total population</b>	<b>34,242</b>	<b>34,332</b>	<b>100.0</b>	<b>100.0</b>	<b>0.3%</b>
Male	17,009	17,154	50.0	49.1	0.9%
Female	17,233	17,178	50.0	50.9	-0.3%
<b>Age</b>					
Under 5	2,250	2,192	6.4	6.2	-2.6%
5 to 9	2,248	2,020	5.9	6.5	-10.1%
10 to 14	2,398	2,520	7.3	6.7	5.1%
15 to 19	2,469	2,348	6.8	6.8	-4.9%
20 to 24	1,985	2,112	6.2	7.0	6.4%
25 to 34	4,164	4,222	12.3	13.8	1.4%
35 to 44	4,013	3,834	11.2	13.1	-4.5%
45 to 54	5,350	4,969	14.5	14.0	-7.1%
55 to 59	2,275	2,477	7.2	6.7	8.9%
60 to 64	1,894	2,029	5.9	5.7	7.1%
65 to 74	2,643	2,963	8.6	7.5	12.1%
75 to 84	1,758	1,794	5.2	4.1	2.0%
85 +	795	852	2.5	1.9	7.2%
Median age (years)	39.2	38.9	(X)	37.3	

U.S. Census Bureau, American Community Survey 2010-2015

## Section 1. Demographic and Socioeconomic Characteristics

**Table 1.2: Race/Ethnicity Distribution**

Race	2010	Percent	2015	Percent	% Change
Total Population	34,242	100.0%	34,332	100.0%	0.3%
One Race	33,963	99.2%	34,104	99.3%	0.4%
White	33,429	97.6%	33,570	97.8%	0.4%
Black or African American	79	0.2%	117	0.3%	48.1%
American Indian and Alaska Native	39	0.1%	30	0.1%	-23.1%
Asian	147	0.4%	187	0.5%	27.2%
Native Hawaiian/Pacific Islander	7	0.0%	7	0.0%	0.0%
Other Race	262	0.8%	193	0.6%	-26.3%
Two or More Races	279	0.8%	228	0.7%	-18.3%
Hispanic or Latino*	597	1.7%	638	1.9%	6.9%

U.S. Census Bureau, 2010-2015 American Community Survey

Effingham County has a predominantly white population, accounting for 97.8% of the county's total population. The racial makeup of the remaining 2.2% are 0.3% Black or African American, 0.1% American Indian or Alaskan Native, 0.5% Asian, 0.7% two or more races, and 0.6% of other race. People of Hispanic or Latino origin of any race accounted for 1.9% of the population. Only 3.0% of Effingham County speaks a language other than English, with the predominant minority language being Spanish (1.6%).

**Table 1.3 Languages Spoken**

Languages	
Speak only English	97.0%
Speak a language other than English	3.0%
Spanish	1.6%
Other Indo-European languages	1.0%
Asian and Pacific Island language	0.4%

U.S. Census Bureau, American Community Survey 2015

## Section 1. Demographic and Socioeconomic Characteristics

Since 2010, the percentage of Effingham County residents age 25+ with a high school degree or higher increased and surpasses State levels. In Effingham County, the percentage of residents (20.9%) with at least a bachelor's degree is still lower compared to the state at 32.3%.

**Table: 1.4: Educational Attainment by Percent of Population Age 25+**

Level of Education	2010		2015	
	Effingham	IL	Effingham	IL
Less than High School	10.6%	13.8%	8.8%	12.1%
High School grad or higher	89.4%	86.2%	91.2%	87.9%
Bachelor's or higher	20.0%	30.3%	20.9%	32.3%
U.S. Census Bureau, 2010-2015 American Community Survey				

**Table 1.5 Student Reading Proficiency**

Report Area	Total Students with Valid Test Scores	Percentage of Students Scoring 'Proficient' or Better	Percentage of Students Scoring 'Not Proficient' or Worse
Effingham County, IL	374	45.8%	54.2%
Illinois	144,944	39.33%	60.67%
United States	3,393,582	49.67%	45.61%

Percentage of Students Scoring 'Not Proficient' or Worse



■ Effingham County, IL (54.2%)  
■ Illinois (60.67%)  
■ United States (45.61%)

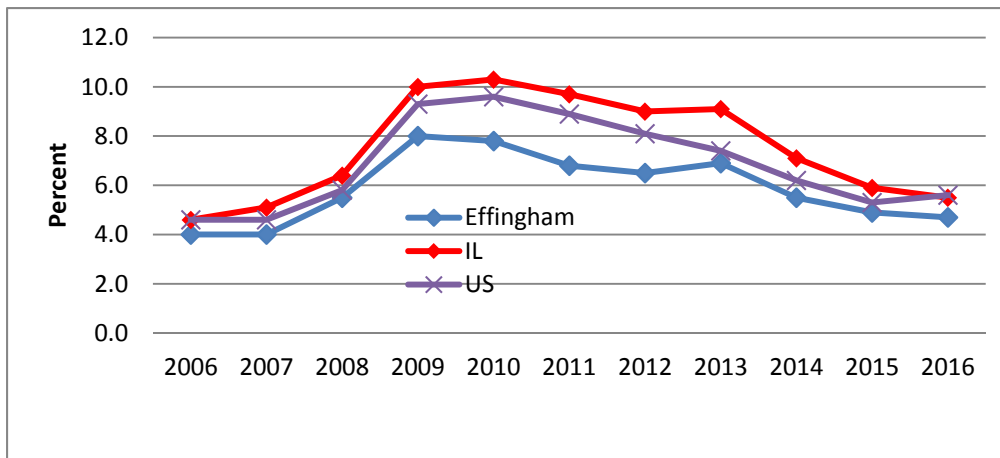
Data Source: US Department of Education, ED Facts. Accessed via DATA.GOV. 2014-15.

Source geography: School District

This indicator reports the percentage of children in grade 4 whose reading skills tested below the "proficient" level for the English Language Arts portion of the state-specific standardized test. In Effingham County 45.8% of 4<sup>th</sup> grade students scored 'proficient' or better compared to the State average of 39.33%, and the National average of 49.67%. This indicator is relevant because an inability to read English well is linked to poverty, unemployment, and barriers to healthcare access, provider communications, and health literacy/education.

## Section 1. Demographic and Socioeconomic Characteristics

**Figure 1.1 Unemployment Rate Trend 2006 - 2016**

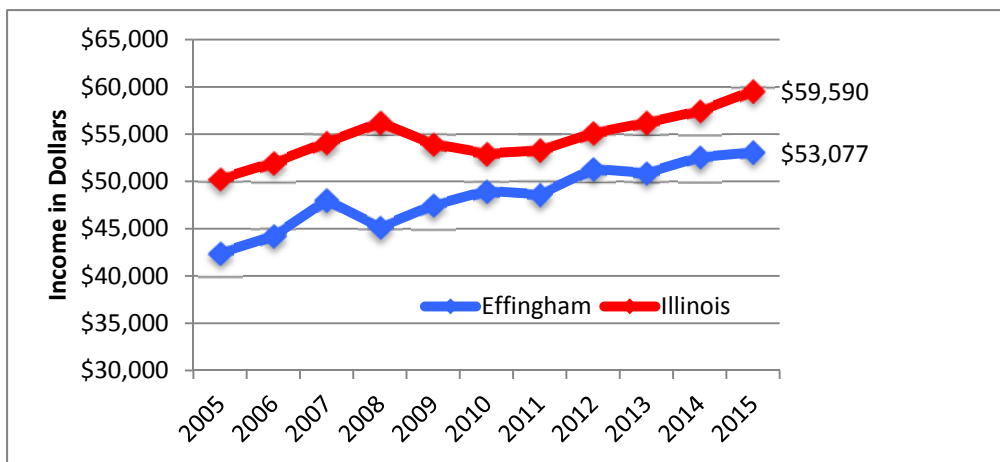


F

Source:

"Small Area Income and Poverty Estimates," US Census Bureau

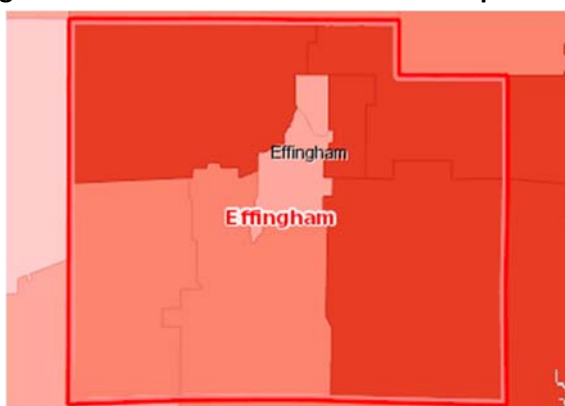
**Figure 1.2 Median Household Income Trend 2005 - 2015**



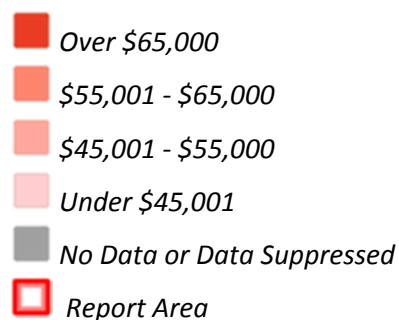
Source: "Small Area Income and Poverty Estimates," US Census Bureau

In Effingham County, the median household income was \$53,077 in 2015. It has been rising to approach the State median household income of \$59,590. The sub-county areas with the lowest median household income are the City of Effingham. Effingham's unemployment rate has mirrored the State and National trends over the past ten years.

**Figure 1.3 Median Household Income Map**



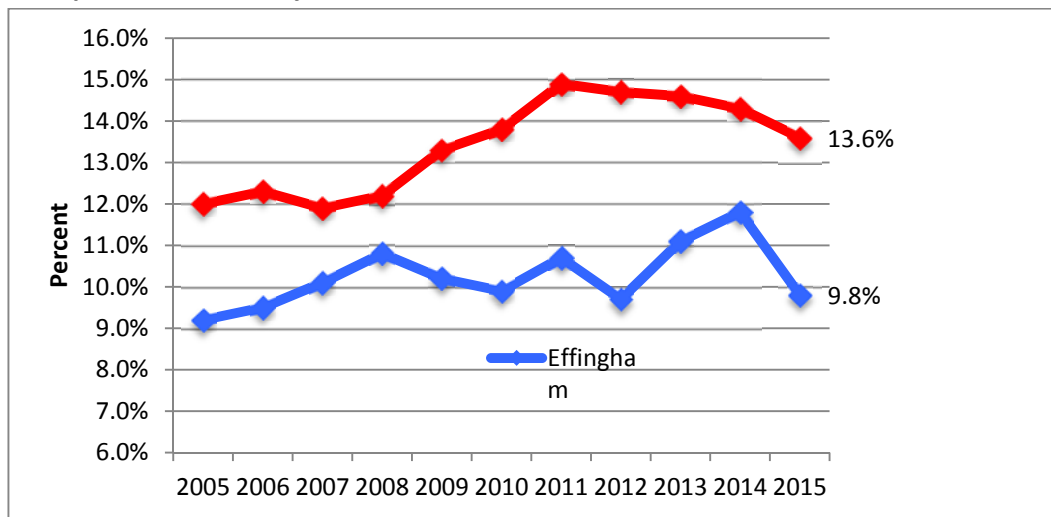
**Median Family Income by Tract, ACS 2011-15**



U.S. Census Bureau, 2010-2015 American Community Survey

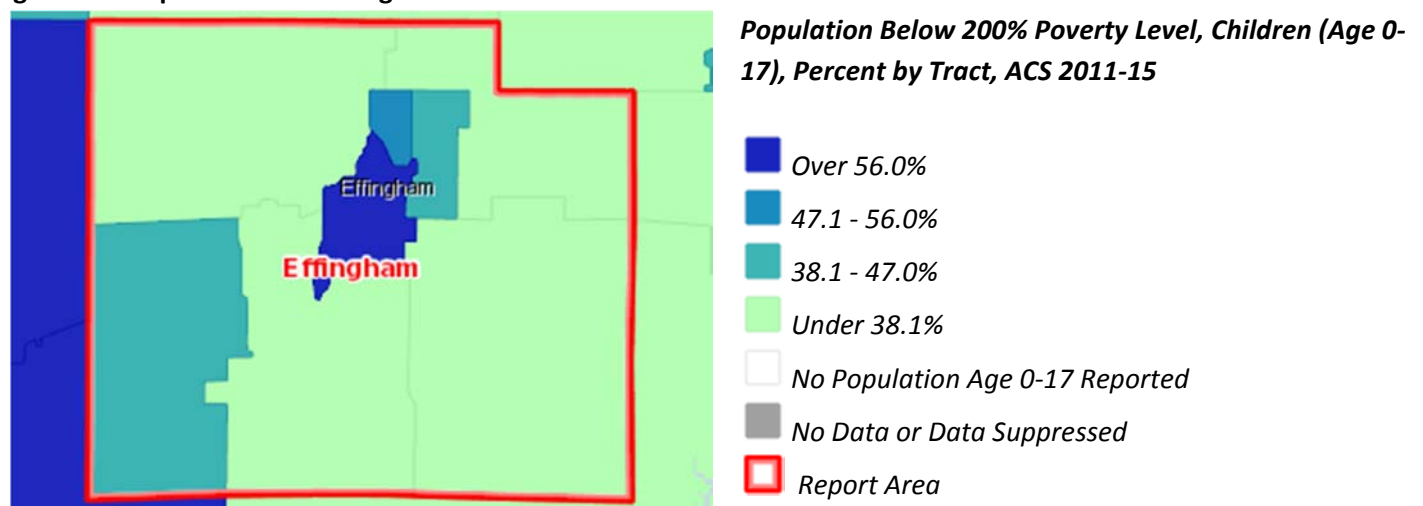
## Section 1. Demographic and Socioeconomic Characteristics

**Figure 1.4 Population in Poverty**



Source: "Small Area Income and Poverty Estimates," US Census Bureau

**Figure 1.5 Map of Children Living Below 200% FLP**



Both Effingham and Jasper County's overall percentage of the population in poverty is lower than the State as a whole. In Effingham County, 40.64% or 3,237 children are living in households with income below 200% of the Federal Poverty Level (FPL). This indicator is relevant because poverty creates barriers to access including health services, healthy food, and other necessities that contribute to poor health status.

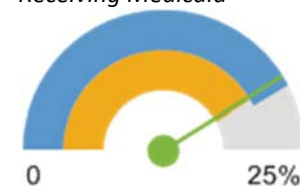
## Section 1. Demographic and Socioeconomic Characteristics

**Table 1.6 Population Receiving Medicaid**

Report Area	Total Population (For Whom Insurance Status is Determined)	Population with Any Health Insurance	Population Receiving Medicaid	Percent of Insured Population Receiving Medicaid
Effingham County, IL	33,927	31,555	6,484	20.55%
Illinois	12,694,224	11,295,589	2,357,392	20.87%
United States	311,516,332	271,070,101	57,557,806	21.23%

Data Source: US Census Bureau, American Community Survey. 2011-15. Source geography: Tract

Percent of Insured Population Receiving Medicaid



■ Effingham County, IL (20.55%)  
 ■ Illinois (20.87%)  
 ■ United States (21.23%)

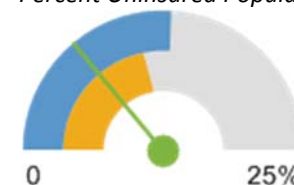
This indicator reports the percentage of the population with insurance enrolled in Medicaid (or other means-tested public health insurance). This indicator is relevant because it assesses vulnerable populations which are more likely to have multiple health access, health status, and social support needs; when combined with poverty data, providers can use this measure to identify gaps in eligibility and enrollment.

**Table 1.7 Uninsured Population**

Report Area	Total Population (For Whom Insurance Status is Determined)	Total Uninsured Population	Percent Uninsured Population
Effingham County, IL	33,927	2,372	6.99%
Illinois	12,694,224	1,398,635	11.02%
United States	311,516,332	40,446,231	12.98%

Data Source: US Census Bureau, American Community Survey. 2011-15. Source geography: Tract

Percent Uninsured Population



■ Effingham County, IL (6.99%)  
 ■ Illinois (11.02%)  
 ■ United States (12.98%)

The lack of health insurance is considered a key driver of health status.

This indicator reports the percentage of the total civilian non-institutionalized population without health insurance coverage. This indicator is relevant because lack of insurance is a primary barrier to healthcare access including regular primary care, specialty care, and other health services that contributes to poor health status.



## Section 1. Demographic and Socioeconomic Characteristics

**Identifying Vulnerable Populations:** The Institute of Medicine defines vulnerable populations as a group of people with certain characteristics that cause them to be at greater risk of having poor health outcomes than the general populations. These characteristics include, but are not limited to age, culture, disability, education, ethnicity, health insurance, housing status, income, mental health and race. The World Health Organization defines **social determinants of health** as conditions in which people are born, grow, live, work and age. The social determinants of health are mostly responsible for health inequities – the unfair and avoidable difference in health status.

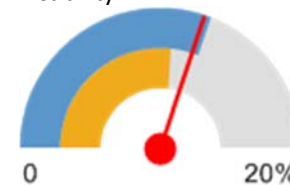
**Population with a disability:** This indicator reports the percentage of the total civilian non-institutionalized population with a disability. This indicator is relevant because disabled individuals comprise a vulnerable population that requires targeted services and outreach by providers.

**Table 1.8 Population with Any Disability**

Report Area	Total Population (For Whom Disability Status Is Determined)	Total Population with a Disability	Percent Population with a Disability
Effingham County, IL	33,927	4,097	12.08%
Illinois	12,694,224	1,362,286	10.73%
United States	311,516,332	38,601,898	12.39%

Data Source: US Census Bureau, American Community Survey. 2011-15. Source geography: Tract

Percent Population with a Disability



■ Effingham County, IL (12.08%)  
■ Illinois (10.73%)  
■ United States (12.39%)

**Figure 1.6 Map of Population with Any Disability**



**Disabled Population, Percent by Tract, ACS 2011-15**

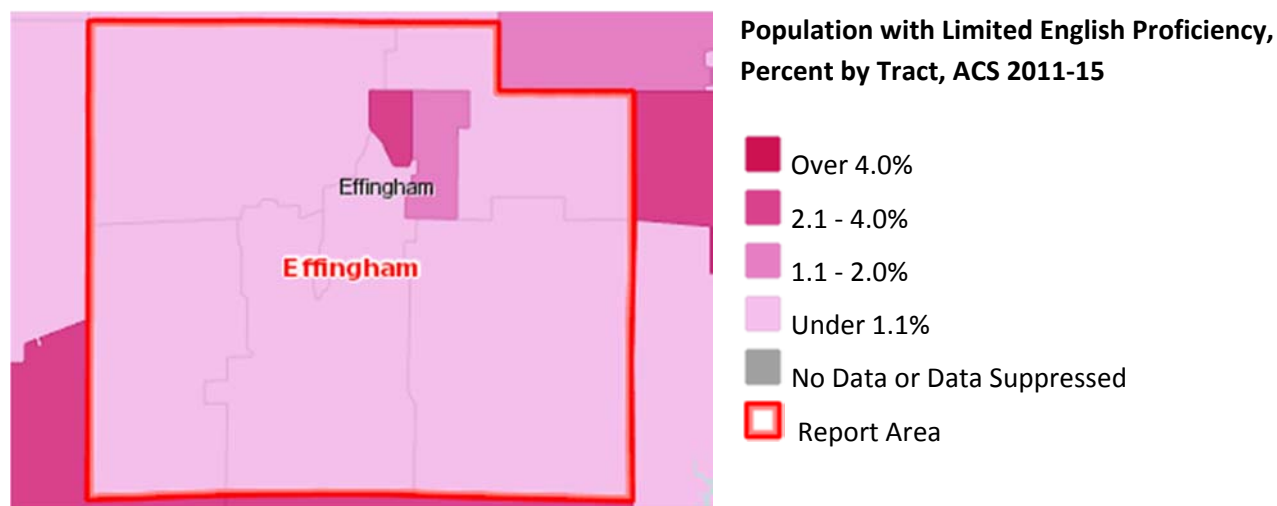
■ Over 18.0%  
■ 15.1 - 18.0%  
■ 12.1 - 15.0%  
■ Under 12.1%  
■ No Data or Data Suppressed  
□ Report Area

## Section 1. Demographic and Socioeconomic Characteristics

**Population with Limited English Proficiency:** This indicator reports the percentage of the population aged 5 and older who speak a language other than English at home and speak English less than "very well." This indicator is relevant because an inability to speak English well creates barriers to healthcare access, provider communications, and health literacy/education.

Effingham County has a total of 258 residents who reported understanding English less than "very well".

**Figure 1.7 Map of Population with Limited English**



**Veteran Population:** This indicator reports the percentage of the population age 18 and older that served (even for a short time), but is not currently serving, on active duty in the U.S. Army, Navy, Air Force, Marine Corps, or the Coast Guard, or that served in the U.S. Merchant Marine during World War II.

**Table 1.9 Veteran Population**

Report Area	Total Population Age 18	Total Veterans	Veterans, Percent of Total Population
Effingham County, IL	26,097	2,318	8.88%
Illinois	9,832,607	668,933	6.8%
United States	241,816,698	20,108,332	8.32%

*Data Source: US Census Bureau, American Community Survey. 2011-15. Source geography: Tract*

## Section 1. Demographic and Socioeconomic Characteristics

**Children Eligible for Free/Reduced Price Lunch** Within the report area 1,933 public school students or 36.49% are eligible for Free/Reduced Price lunch out of 5,297 total students enrolled. This indicator is relevant because it assesses vulnerable populations which are more likely to have multiple health access, health status, and social support needs.

**Table 1.11 Children Eligible for Free/Reduced Lunch**

Report Area	Total Students	Number Free/Reduced Price Lunch Eligible	Percent Free/Reduced Price Lunch Eligible
Effingham County, IL	5,297	1,933	36.49%
Illinois	2,049,231	1,044,588	51.44%
United States	50,195,195	26,012,902	52.35%

Data Source: National Center for Education Statistics, NCES - Common Core of Data. 2013-14. Source geography: Address

Percent Students Eligible for Free or Reduced Price Lunch



Effingham County, IL (36.49%)  
Illinois (51.44%)  
United States (52.35%)

**Children with Food Insecurity:** This indicator reports the estimated percentage of the population under age 18 that experienced food insecurity at some point during the report year. Food insecurity is the household-level economic and social condition of limited or uncertain access to adequate food.

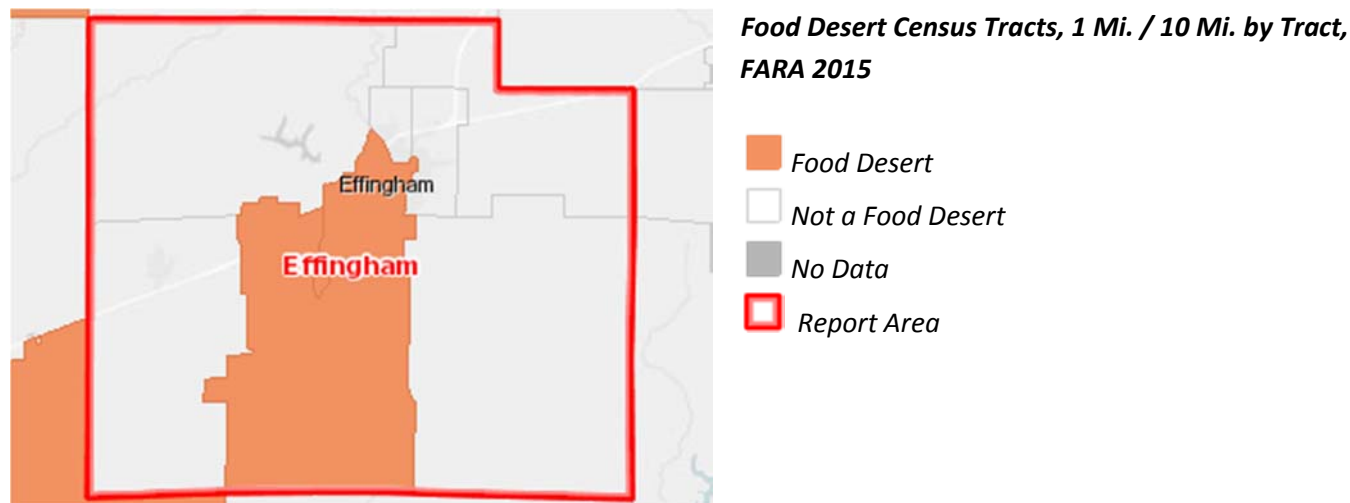
**Table 1.10 Child Food Insecurity**

Report Area	Population Under Age 18	Food Insecure Children, Total	Child Food Insecurity Rate
Effingham County, IL	8,391	1,680	20.02%
Illinois	3,022,155	643,040	21.28%
United States	73,580,326	17,284,530	23.49%

## Section 1. Demographic and Socioeconomic Characteristics

**Food Desert:** A food desert is defined as a low-income census tract (where a substantial number or share of residents has low access to a supermarket or large grocery store). This indicator is relevant because it highlights populations and geographies facing food insecurity. Approximately 50% of Effingham County residents live in a “food desert”.

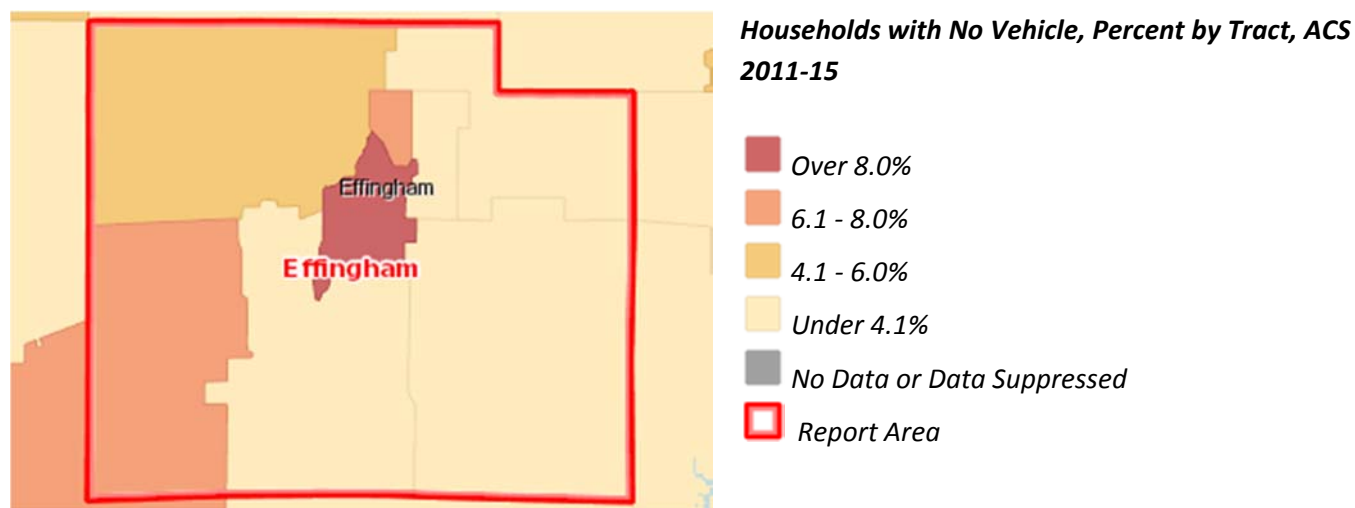
**Figure 1.8 Map of Food Deserts**



Data Source: US Census Bureau, County Business Patterns. Additional data analysis by CARES. 2014. Source geography: County

**Households with No Motor Vehicle:** This indicator reports the number and percentage of households with no motor vehicle based on the latest 5-year American Community Survey estimates. A total of 599 households in Effingham County are estimated to have no motor vehicle (4.49% of population).

**Figure 1.9 Map of Households with No Motor Vehicle Access**



Data Source: Centers for Disease Control and Prevention, National Vital Statistics System. Accessed via CDC WONDER. 2010-14. Source geography: County

**Table 2.1 Leading Causes of Death**

Top Ten Leading Causes of Death in 2015			
		Effingham	Illinois
Rank	Cause of Death	Percent of Deaths	Percent of Deaths
1	Diseases of the Heart	24.2%	24.0%
2	Cancer	20.0%	23.1%
3	Stroke	8.6%	5.3%
4	Accidents	5.4%	4.5%
5	Alzheimer's	5.4%	3.4%
6	Chronic Lower Respiratory	5.2%	5.2%
7	Diabetes	2.5%	2.6%
8	Influenza and Pneumonia	2.0%	2.2%
8	Septicemia	2.0%	1.7%
10	Kidney Disease	1.0%	2.4%

Source: Illinois Department of Public Health Death Statistics

In 2015, the leading cause of death in Effingham County was heart disease with cancer as the second leading cause. Similarly, heart disease and cancer were the top two leading causes of death in the state of Illinois. The percentage of deaths caused by stroke, accidents, and Alzheimer's disease are higher in Effingham County than in the State of IL. Effingham County is ranked 47 out of 102 counties in Illinois for length of life. Premature death is considered death before the age 75. The top three leading causes of premature death in Effingham County were cancer, heart disease, and accidents (unintentional injury).

**Table 2.2 Leading Causes of Premature Death (before age 75)**

Effingham County – 2012- 2014		
Cause	Deaths	Age-Adjusted Rate per 100,000
Cancer	105	85.3
Diseases of the Heart	76	60.6
Accidents	37	38.2

Source: National Vital Statistics System

In Effingham County, the female life expectancy is 80.9 year, and the male life expectancy is 76.1 years. The U.S. median life expectancy is 75.0 years. (Kulkarni, S., et al. (2011). Population Health Metrics. Available at <http://www.pophealthmetrics.com/content/11/1/8>)

## Section 2. General Health and Access to Care Indicators

**Table 2.3 Poor Dental Health**

Report Area	Total Population (Age 18 )	Total Adults with Poor Dental Health	Percent Adults with Poor Dental Health
Effingham County, IL	25,443	4,765	18.7%
Illinois	9,654,603	1,418,280	14.7%
United States	235,375,690	36,842,620	15.7%

Data Source: Centers for Disease Control and Prevention, Behavioral Risk Factor Surveillance System. Additional data analysis by CARES. 2006-10. Source geography: County

Percent Adults with Poor Dental Health



■ Effingham County, IL (18.7%)  
■ Illinois (14.7%)  
■ United States (15.7%)

This indicator reports the percentage of adults age 18 and older who self-report that six or more of their permanent teeth have been removed due to tooth decay, gum disease, or infection.

**Table 2.4 Poor General Health**

Report Area	Total Population Age 18	Estimated Population with Poor or Fair Health	Crude Percentage	Age-Adjusted Percentage
Effingham County, IL	25,670	3,286	12.8%	11%
Illinois	9,654,603	1,486,809	15.4%	15.1%
United States	232,556,016	37,766,703	16.2%	15.7%

Data Source: Centers for Disease Control and Prevention, Behavioral Risk Factor Surveillance System. Accessed via the Health Indicators Warehouse. US Department of Health Human Services, Health Indicators Warehouse. 2006-12. Source geography: County

Percent Adults with Poor or Fair Health (Age-Adjusted)



■ Effingham County, IL (11%)  
■ Illinois (15.1%)  
■ United States (15.7%)

Within the report area 12.8% of adults age 18 and older self-report having poor or fair health in response to the question "Would you say that in general your health is excellent, very good, good, fair, or poor?".

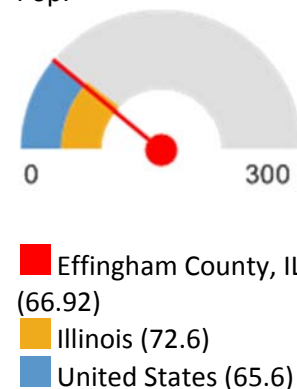
## Access to Health Care

**Table 2.5 Access to Dentists**

Report Area	Total Population, 2015	Dentists, 2015	Dentists, Rate per 100,000 Pop.
Effingham County, IL	34,371	23	66.92
Illinois	12,859,995	9,336	72.6
United States	321,418,820	210,832	65.6

Data Source: US Department of Health Human Services, Health Resources and Services Administration, Area Health Resource File. 2015. Source geography: County

Dentists, Rate per 100,000 Pop.



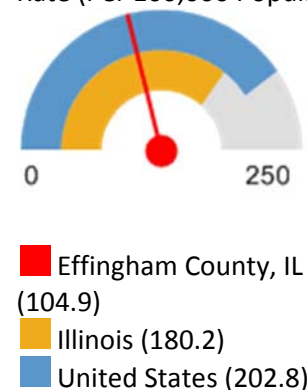
This indicator reports the number of dentists per 100,000 population. This indicator includes all dentists - qualified as having a doctorate in dental surgery (D.D.S.) or dental medicine (D.M.D.), who are licensed by the state to practice dentistry and who are practicing within the scope of that license.

**Table 2.6 Access to Mental Health Providers**

Report Area	Estimated Population	Number of Mental Health Providers	Ratio of Mental Health Providers to Population (1 Provider per x Persons)	Mental Health Care Provider Rate (Per 100,000 Population)
Effingham County, IL	34,318	36	953.3	104.9
Illinois	12,806,917	23,090	554.7	180.2
United States	317,105,555	643,219	493	202.8

Data Source: University of Wisconsin Population Health Institute, County Health Rankings. 2016. Source geography: County

Mental Health Care Provider Rate (Per 100,000 Population)



This indicator reports the rate of the county population to the number of mental health providers including psychiatrists, psychologists, clinical social workers, and counselors that specialize in mental health care.

## Section 2. General Health and Access to Care Indicators

**Table 2.7 Access to Primary Care Physicians**

Report Area	Total Population, 2014	Primary Care Physicians, 2014	Primary Care Physicians, Rate per 100,000 Pop.
Effingham County, IL	34,320	26	75.76
Illinois	12,880,580	12,477	96.9
United States	318,857,056	279,871	87.8

Data Source: US Department of Health Human Services, Health Resources and Services Administration, Area Health Resource File. 2014. Source geography: County

Primary Care Physicians, Rate per 100,000 Pop.



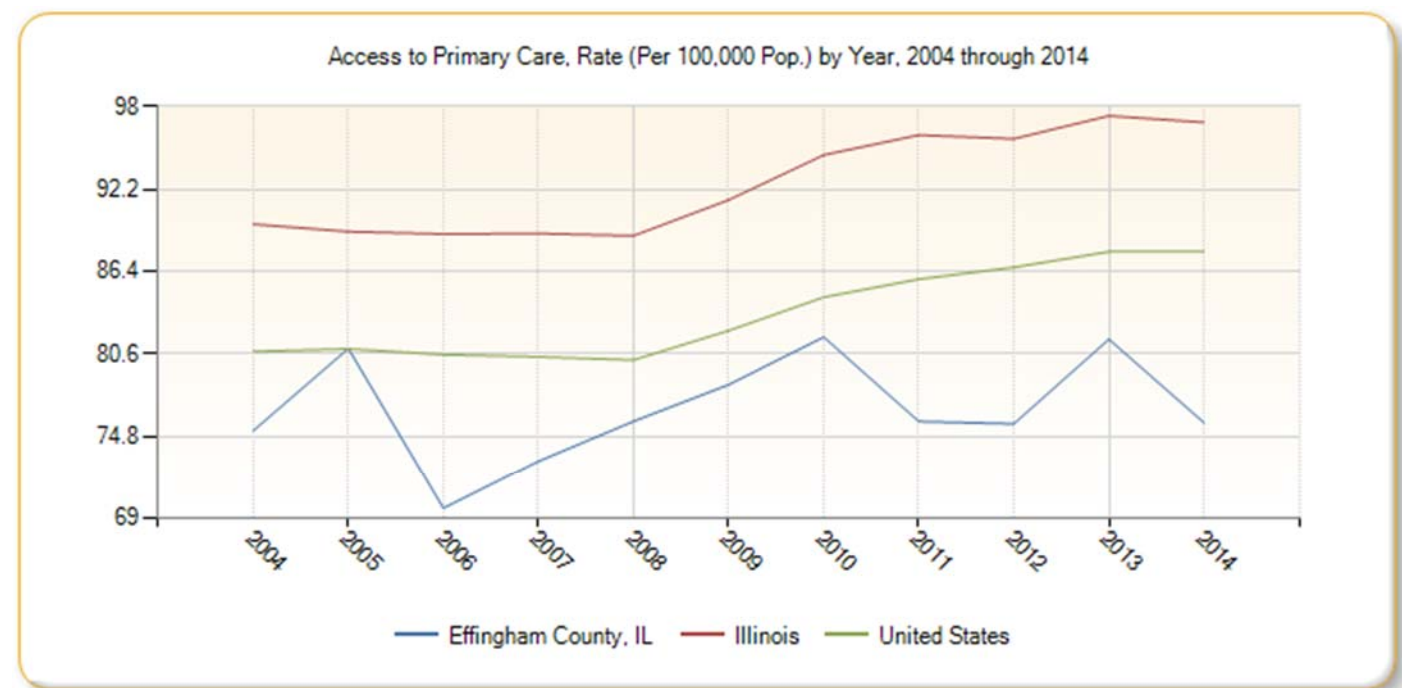
■ Effingham County, IL (75.76)  
 ■ Illinois (96.9)  
 ■ United States (87.8)

This indicator reports the number of primary care physicians per 100,000 population. Doctors classified as "primary care physicians" by the AMA include: General Family Medicine MDs and DOs, General Practice MDs and DOs, General Internal Medicine MDs and General Pediatrics MDs. Physicians age 75 and over and physicians practicing sub-specialties within the listed specialties are excluded.

**Table 2.8 Access to Primary Care Physicians Trend 2004-2014** (rate per 100,000 population by year)

Report Area	2004	2005	2006	2007	2008	2009	2010	2011	2012	2013	2014
Effingham County, IL	75.2	80.97	69.71	73.05	75.86	78.43	81.77	75.85	75.68	81.62	75.76
Illinois	89.76	89.24	89.07	89.11	88.95	91.45	94.59	95.99	95.72	97.33	96.87
United States	80.76	80.94	80.54	80.38	80.16	82.22	84.57	85.83	86.66	87.76	87.77

**Figure 2.1 Access to Primary Care Physicians Trend 2004-2014**





## Health Care Utilization

**Table 2.9 Cancer Screening - Mammogram**

Report Area	Total Medicare Enrollees	Female Medicare Enrollees Age 67-69	Female Medicare Enrollees with Mammogram in Past 2 Years	Percent Female Medicare Enrollees with Mammogram in Past 2 Year
Effingham County, IL	4,863	423	274	64.8%
Illinois	316,321	26,965	16,987	63%
United States	26,753,396	2,395,946	1,510,847	63.1%

Data Source: Dartmouth College Institute for Health Policy Clinical Practice, Dartmouth Atlas of Health Care. 2014. Source geography: County

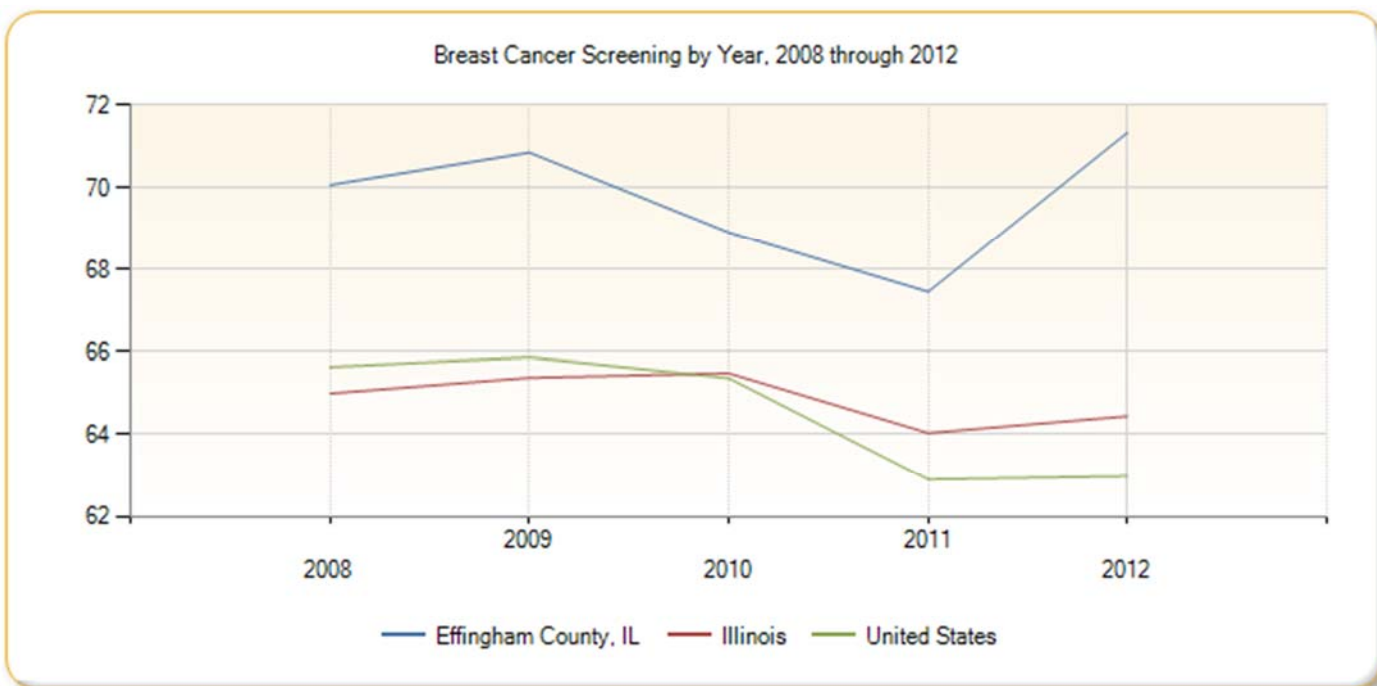
Percent Female Medicare Enrollees with Mammogram in Past 2 Year



Effingham County, IL (64.8%)  
Illinois (63%)  
United States (63.1%)

This indicator reports the percentage of female Medicare enrollees, age 67-69, who have received one or more mammograms in the past two years. This indicator is relevant because engaging in preventive behaviors allows for early detection and treatment of health problems.

**Figure 2.2 Cancer Screening – Mammogram Trend 2008 - 2012**



## Section 2. General Health and Access to Care Indicators

**Table 2.10 Dental Care Utilization**

Report Area	Total Population (Age 18 )	Total Adults Without Recent Dental Exam	Percent Adults with No Dental Exam
Effingham County, IL	25,443	7,589	29.8%
Illinois	9,654,603	2,981,670	30.9%
United States	235,375,690	70,965,788	30.2%

Data Source: Centers for Disease Control and Prevention, Behavioral Risk Factor Surveillance System. Additional data analysis by CARES. 2006-10. Source geography: County

Percent Adults Without Recent Dental Exam



■ Effingham County, IL (29.8%)  
 ■ Illinois (30.9%)  
 ■ United States (30.2%)

This indicator reports the percentage of adults aged 18 and older who self-report that they have not visited a dentist, dental hygienist or dental clinic within the past year. The latest available data is from 2010.

**Table 2.11 Diabetes Management –Hemoglobin A1c Test**

Report Area	Total Medicare Enrollees	Medicare Enrollees with Diabetes	Medicare Enrollees with Diabetes with Annual Exam	Percent Medicare Enrollees with Diabetes with Annual Exam
Effingham County, IL	4,863	580	501	86.6%
Illinois	316,321	36,855	31,820	86.3%
United States	26,753,396	3,314,834	2,822,996	85.2%

Data Source: Dartmouth College Institute for Health Policy Clinical Practice, Dartmouth Atlas of Health Care. 2014. Source geography: County

Percent Medicare Enrollees with Diabetes with Annual Exam



■ Effingham County, IL (86.6%)  
 ■ Illinois (86.3%)  
 ■ United States (85.2%)

This indicator reports the percentage of diabetic Medicare patients who have had a hemoglobin A1c (hA1c) test, a blood test which measures blood sugar levels, administered by a health care professional in the past year. In the report area, 501 Medicare enrollees with diabetes have had an annual exam out of 580 Medicare enrollees in the report area with diabetes, or 86.6%.

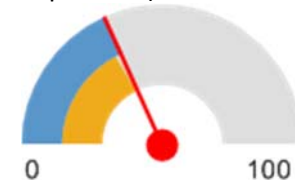
### Section 3. Maternal and Child Health Indicators

**Table 3.1 Teen Birth Rate**

Report Area	Female Population Age 15 - 19	Births to Mothers Age 15 - 19	Teen Birth Rate (Per 1,000 Population)
Effingham County, IL	1,150	42	36.5
Illinois	448,356	15,692	35
United States	10,736,677	392,962	36.6

Data Source: US Department of Health Human Services, Health Indicators Warehouse. Centers for Disease Control and Prevention, National Vital Statistics System. Accessed via CDC WONDER. 2006-12. Source geography: County

Teen Birth Rate (Per 1,000 Population)



■ Effingham County, IL (36.5)  
■ Illinois (35)  
■ United States (36.6)

This indicator reports the rate of total births to women age of 15 - 19 per 1,000 female population age 15 - 19. This indicator is relevant because in many cases, teen parents have unique social, economic, and health support services. Additionally, high rates of teen pregnancy may indicate the prevalence of unsafe sex practices. Effingham County's teen birth rate (42 per 1,000) is higher than Illinois (35 per 1,000). The distribution of mother's age is younger in Effingham County than average.

**Table 3.2 Mother's Age 2014**

Resident County	Total Births	Mother's Age Group (Years)					
		< 20	20 - 24	25 - 29	30 - 34	35 - 39	40 +
ILLINOIS	158,522	6%	20%	27%	30%	14%	3%
Effingham	434	8%	25%	35%	24%	8%	1%

Source: Birth Demographics by Resident County 2014, IDPH

**Table 3.3 Birth Characteristics**

Resident County	Total Births	Cesarean Births		Mother Unmarried		Not H.S. Graduate Age 20+	
		Births	Percent	Births	Percent	Births	Percent
ILLINOIS	158,522	49,473	31.2 %	63,521	40.1 %	15,778	10.7 %
Effingham	434	129	29.7 %	149	34.3 %	25	6.3 %

Source: Birth Characteristics by Resident County 2014, IDPH

\*\*Rate suppressed because low number does not meet standards of reliability or precision

### Section 3. Maternal and Child Health Indicators

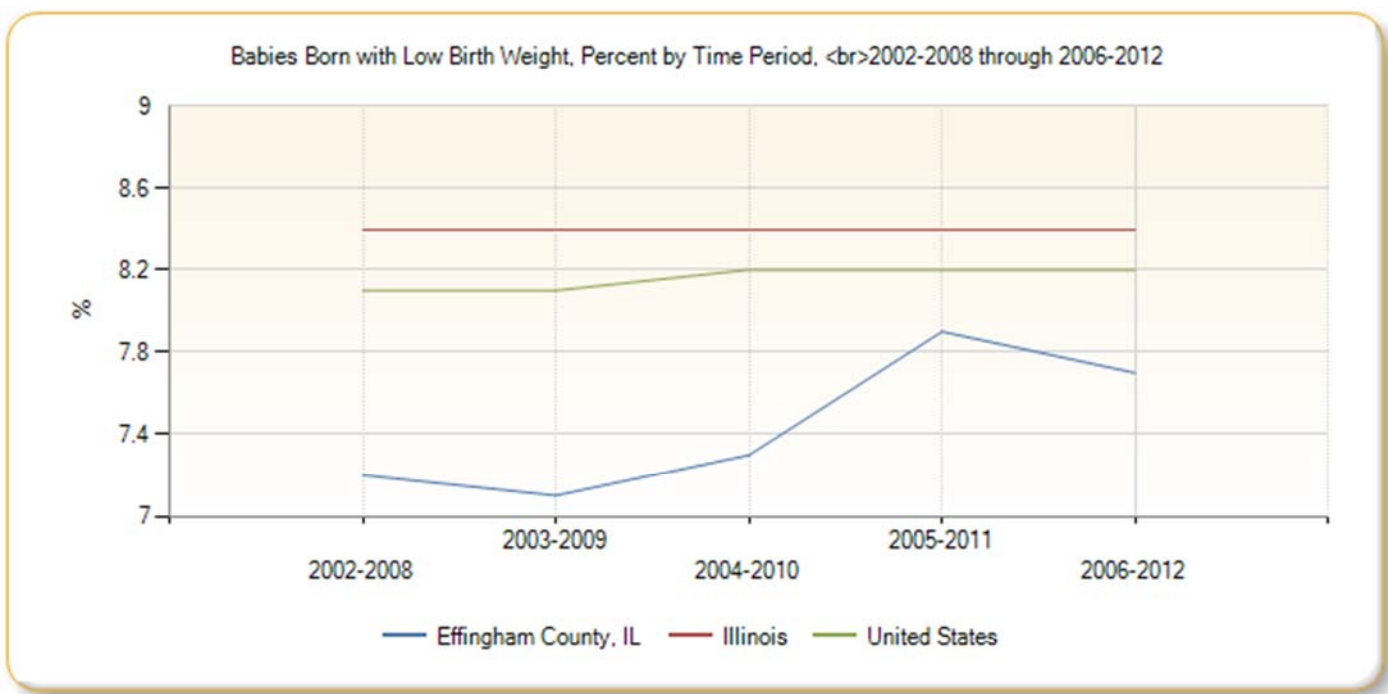
**Table 3.4 Birth by Characteristics 2014**

Resident County	Total Births	Low Birth Weight (<2,500 grams)		Very Low Birth Weight (<1,500 grams)		Preterm (<37 weeks)	
		Births	Percent	Births	Percent	Births	Percent
<b>ILLINOIS</b>	<b>158,522</b>	<b>12,966</b>	<b>8.20%</b>	<b>2,448</b>	<b>1.50%</b>	<b>16,003</b>	<b>10.10%</b>
Effingham	434	28	6.50%	8	**	32	7.40%

Source: Birth Characteristics by Resident County 2014, IDPH

\*\*Rate suppressed because low number does not meet standards of reliability or precision

**Figure 3.1 Low Birth Weight Trend 2002- 2012**



In 2014, Effingham County's percentage of low birth weights was not higher than Illinois or the United States. The trend from 2002- 2012 shows an increase in babies born with low birth weights, nearing the state and national rates.

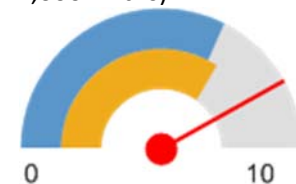
### Section 3. Maternal and Child Health Indicators

**Table 3.5 Infant Mortality (2006-2010)**

Report Area	Total Births	Total Infant Deaths	Infant Mortality Rate (Per 1,000 Births)
Effingham County, IL	2,315	19	8.4
Illinois	879,035	6,065	6.9
United States	20,913,535	136,369	6.5
<a href="#">HP 2020 Target</a>			<= 6.0

Data Source: US Department of Health Human Services, Health Resources and Services Administration, Area Health Resource File. 2006-10. Source geography: County

Infant Mortality Rate (Per 1,000 Births)



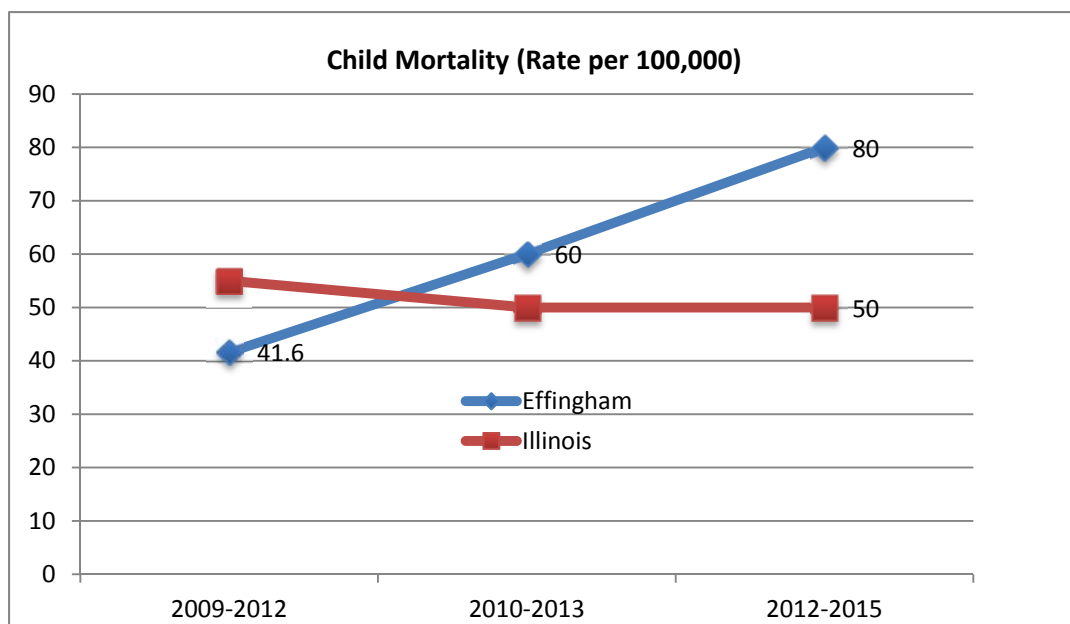
■ Effingham County, IL (8.4)  
■ Illinois (6.9)  
■ United States (6.5)

This indicator reports the rate of deaths to infants less than one year of age per 1,000 births. Effingham County has a higher infant mortality rate than Illinois and the United States. The rate is above the Healthy People 2020 Target of 6.0 per 1,000 births.

**Table 3.6 Number of Infant Deaths (2010-2014)**

Infant Deaths	2010	2011	2012	2013	2014
Effingham County	3	1	2	6	4
Jasper County	0	2	2	1	0

Source: IDPH Vital Statistics



**Figure 3.2**  
**Child**  
**Mortality**

This indicator reports the number of deaths among children under age 18 per 100,000 population. Illinois’s child mortality rate has decreased since 2009, while Effingham County’s child mortality rate has increased and is now above the State level.

### Section 3. Maternal and Child Health Indicators

---

**Table 3.7 Child Abuse and Neglect Statistics**

<b>Child Abuse and Neglect 2014-2015 (Rate per 1,000)</b>		
	<b>Effingham County</b>	<b>Illinois</b>
Alleged Victims of Sexual Abuse	1.3	<b>2.2</b>
Alleged Victims of Abuse and Neglect	28.2	<b>29.0</b>
Indicated Victims of Abuse and Neglect	6.0	<b>7.6</b>

Source: IL DCFS

Effingham County’s rates of child abuse and neglect are lower than the State rate.

## Section 4. Chronic Disease Indicators

### Health Outcomes:

Effingham County's cancer mortality rate is slightly higher than the Illinois and National Rate, all of which are higher than the Healthy People 2020 Target (160.6). Additionally, Effingham County's cancer incident rate is higher than the National rate for colon and rectum cancer, and prostate cancer.

**Table 4.1 Cancer Mortality Rate**

Report Area	Total Population	Average Annual Deaths, 2010-2014	Crude Death Rate (Per 100,000 Pop.)	Age-Adjusted Death Rate (Per 100,000 Pop.)
Effingham County, IL	34,301	77	223.32	175.5
Illinois	12,867,528	24,326	189.05	173.9
United States	313,836,267	581,919	185.42	166.3
<a href="#">HP 2020 Target</a>				<= 160.6

Data Source: Centers for Disease Control and Prevention, National Vital Statistics System. Accessed via CDC WONDER. 2010-14. Source geography: County

Cancer Mortality, Age-Adjusted Death Rate (Per 100,000 Pop.)



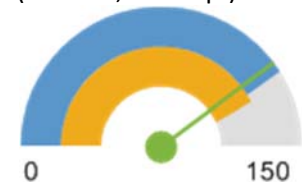
■ Effingham County, IL (175.5)  
 ■ Illinois (173.9)  
 ■ United States (166.3)

**Table 4.2 Breast Cancer Incidence Rate**

Report Area	Estimated Total Population (Female)	New Cases (Annual Average)	Cancer Incidence Rate (Per 100,000 Pop.)
Effingham County, IL	2,093	25	119.4
Illinois	741,089	9,523	128.5
United States	18,056,679	222,845	123.41

Data Source: State Cancer Profiles. 2009-13. Source geography: County

Annual Breast Cancer Incidence Rate (Per 100,000 Pop.)



■ Effingham County, IL (119.4)  
 ■ Illinois (128.5)  
 ■ United States (123.41)

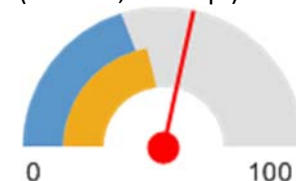
## Section 4. Chronic Disease Indicators

**Table 4.3 Colon and Rectum Cancer Incidence Rate**

Report Area	Estimated Total Population	New Cases (Annual Average)	Cancer Incidence Rate (Per 100,000 Pop.)
Effingham County, IL	4,232	24	56.7
Illinois	1,382,781	6,264	45.3
United States	33,989,067	137,973	40.59
<a href="#">HP 2020 Target</a>			<= 38.7

Data Source: State Cancer Profiles. 2009-13. Source geography: County

Annual Colon and Rectum Cancer Incidence Rate (Per 100,000 Pop.)



■ Effingham County, IL (56.7)  
■ Illinois (45.3)  
■ United States (40.59)

**Table 4.4 Prostate Cancer Incidence Rate**

Report Area	Estimated Total Population (Male)	New Cases (Annual Average)	Cancer Incidence Rate (Per 100,000 Pop.)
Effingham County, IL	2,005	32	159.6
Illinois	650,000	8,372	128.8
United States	16,301,685	201,179	123.41

Data Source: State Cancer Profiles. 2009-13. Source geography: County

Annual Prostate Cancer Incidence Rate (Per 100,000 Pop.)



■ Effingham County, IL (159.6)  
■ Illinois (128.8)  
■ United States (123.41)

**Table 4.5 Lung Cancer Incidence Rate**

Report Area	Estimated Total Population	New Cases (Annual Average)	Cancer Incidence Rate (Per 100,000 Pop.)
Effingham County, IL	4,296	29	67.5

Annual Lung Cancer Incidence Rate (Per 100,000 Pop.)



Illinois	1,370,544	9,306	67.9
United States	33,999,704	212,905	62.62

Data Source: State Cancer Profiles. 2009-13. Source geography: County



■ Effingham County, IL (67.5)  
■ Illinois (67.9)  
■ United States (62.62)

#### Section 4. Chronic Disease Indicators

**Table 4.6 Lung Disease Mortality Rate**

Report Area	Total Population	Average Annual Deaths, 2007-2011	Crude Death Rate (Per 100,000 Pop.)	Age-Adjusted Death Rate (Per 100,000 Pop.)
Effingham County, IL	34,301	20	58.89	45.7
Illinois	12,867,528	5,419	42.12	39.2
United States	313,836,267	144,125	45.92	41.7

Data Source: Centers for Disease Control and Prevention, National Vital Statistics System. Accessed via CDC WONDER. 2010-14. Source geography: County

Lung Disease Mortality, Age-Adjusted Death Rate (Per 100,000 Pop.)



■ Effingham County, IL (45.7)  
■ Illinois (39.2)  
■ United States (41.7)

This indicator reports the rate of death due to chronic lower respiratory disease per 100,000 population. Figures are reported as crude rates, and as rates age-adjusted to year 2000 standard. Lung disease mortality is higher in Effingham County than the Illinois and United States average.

**Table 4.7 Adult Asthma Prevalence**

Report Area	Survey Population (Adults Age 18 )	Total Adults with Asthma	Percent Adults with Asthma
Effingham County, IL	31,370	5,144	16.4%
Illinois	9,701,927	1,265,744	13%
United States	237,197,465	31,697,608	13.4%

Data Source: Centers for Disease Control and Prevention, Behavioral Risk Factor Surveillance System. Additional data analysis by CARES. 2011-12. Source geography: County

Percent Adults with Asthma



■ Effingham County, IL (16.4%)  
■ Illinois (13%)  
■ United States (13.4%)

This indicator reports the percentage of adults aged 18 and older who self-report that they have ever been told by a doctor, nurse, or other health professional that they had asthma. Effingham County's adult asthma rate is higher than the Illinois and United States rate.

#### Section 4. Chronic Disease Indicators

**Table 4.8 Depression Prevalence – Medicare population**

Report Area	Total Medicare Beneficiaries	Beneficiaries with Depression	Percent with Depression
Effingham County, IL	6,576	1,106	16.8%
Illinois	1,476,750	219,269	14.8%
United States	34,096,898	5,537,063	16.2%

Data Source: Centers for Medicare and Medicaid Services. 2014. Source geography: County

Percentage of Medicare Beneficiaries with Depression



■ Effingham County, IL (16.8%)  
 ■ Illinois (14.8%)  
 ■ United States (16.2%)

This indicator reports the percentage of the Medicare fee-for-service population with depression. In Effingham County the prevalence is higher than in Illinois.

**Table 4.9 Adult Diabetes Prevalence**

Report Area	Total Population Age 20	Population with Diagnosed Diabetes	Population with Diagnosed Diabetes, Crude Rate	Population with Diagnosed Diabetes, Age-Adjusted Rate
Effingham County, IL	25,383	2,716	10.7	9.2%
Illinois	9,507,158	864,658	9.09	8.47%
United States	236,919,508	23,685,417	10	9.19%

Data Source: Centers for Disease Control and Prevention, National Center for Chronic Disease Prevention and Health Promotion. 2013. Source geography: County

Percent Adults with Diagnosed Diabetes (Age-Adjusted)



■ Effingham County, IL (9.2%)  
 ■ Illinois (8.47%)  
 ■ United States (9.19%)

This indicator reports the percentage of adults aged 20 and older who have ever been told by a doctor that they have diabetes. Diabetes prevalence is slightly higher in Effingham County than in Illinois and the United States.

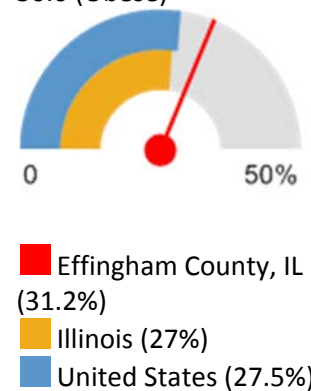
#### Section 4. Chronic Disease Indicators

**Table 4.10 Adult Obesity**

Report Area	Total Population Age 20	Adults with BMI > 30.0 (Obese)	Percent Adults with BMI > 30.0 (Obese)
Effingham County, IL	25,280	8,039	31.2%
Illinois	9,511,847	2,600,939	27%
United States	234,188,203	64,884,915	27.5%

Data Source: Centers for Disease Control and Prevention, National Center for Chronic Disease Prevention and Health Promotion. 2013. Source geography: County

Percent Adults with BMI > 30.0 (Obese)

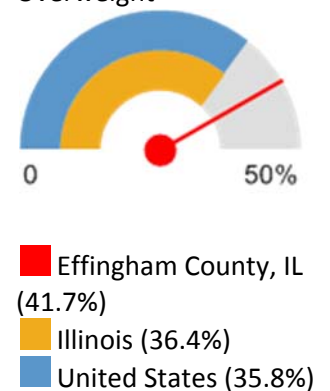


**Table 4.11 Prevalence of Overweight Adults**

Report Area	Survey Population (Adults Age 18 )	Total Adults Overweight	Percent Adults Overweight
Effingham County, IL	31,135	12,997	41.7%
Illinois	9,476,490	3,448,247	36.4%
United States	224,991,207	80,499,532	35.8%

Data Source: Centers for Disease Control and Prevention, Behavioral Risk Factor Surveillance System. Additional data analysis by CARES. 2011-12. Source geography: County

Percent Adults Overweight



**Figure 4.1 Adult Obesity Trend**



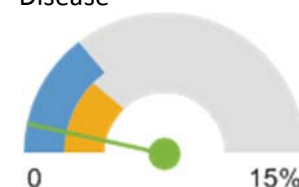
#### Section 4. Chronic Disease Indicators

**Table 4.12 Heart Disease Prevalence**

Report Area	Survey Population (Adults Age 18 )	Total Adults with Heart Disease	Percent Adults with Heart Disease
Effingham County, IL	31,485	315	1%
Illinois	9,681,141	369,926	3.8%
United States	236,406,904	10,407,185	4.4%

Data Source: Centers for Disease Control and Prevention, Behavioral Risk Factor Surveillance System. Additional data analysis by CARES. 2011-12. Source geography: County

Percent Adults with Heart Disease



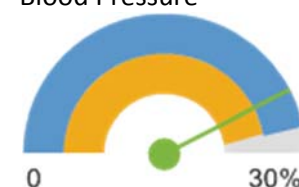
■ Effingham County, IL (1%)  
 ■ Illinois (3.8%)  
 ■ United States (4.4%)

In Effingham County, 315, or 1% of adults aged 18 and older have ever been told by a doctor that they have coronary heart disease or angina.

**Table 4.13 High Blood Pressure Prevalence**

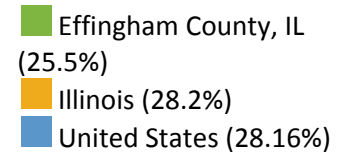
Report Area	Total Population (Age 18 )	Total Adults with High Blood Pressure	Percent Adults with High Blood Pressure
Effingham County, IL	25,670	6,546	25.5%
Illinois	9,654,603	2,722,598	28.2%

Percent Adults with High Blood Pressure



United States	232,556,016	65,476,522	28.16%
---------------	-------------	------------	--------

Data Source: Centers for Disease Control and Prevention, Behavioral Risk Factor Surveillance System. Additional data analysis by CARES. 2006-12. Source geography: County



In Effingham County, between 2006 and 2012, 6,546, or 25.5% of adults aged 18 and older have ever been told by a doctor that they have high blood pressure or hypertension.

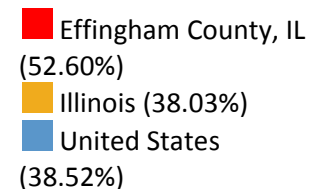
#### Section 4. Chronic Disease Indicators

**Table 4.14 High Cholesterol Prevalence**

Report Area	Survey Population (Adults Age 18 )	Total Adults with High Cholesterol	Percent Adults with High Cholesterol
Effingham County, IL	28,770	15,132	52.60%
Illinois	7,348,647	2,794,348	38.03%
United States	180,861,326	69,662,357	38.52%

Data Source: Centers for Disease Control and Prevention, Behavioral Risk Factor Surveillance System. Additional data analysis by CARES. 2011-12. Source geography: County

Percent Adults with High Cholesterol

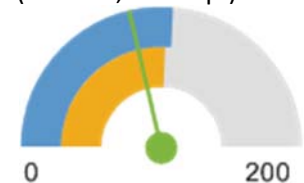


This indicator reports the percentage of adults aged 18 and older who self-report that they have ever been told by a doctor, nurse, or other health professional that they had high blood cholesterol. More than 50% of the population of Effingham County had high cholesterol, compared to 38% in Illinois and the United States.

#### 4.15 Heart Disease Mortality

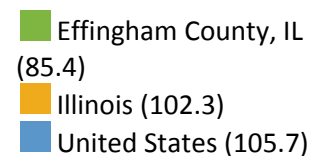
Report Area	Total Population	Average Annual Deaths, 2010-2014	Crude Death Rate (Per 100,000 Pop.)	Age-Adjusted Death Rate (Per 100,000 Pop.)
Effingham County, IL	34,301	39	114.28	85.4
Illinois	12,867,528	14,592	113.4	102.3
United States	313,836,267	372,125	118.57	105.7

Coronary Heart Disease Mortality, Age-Adjusted Death Rate (Per 100,000 Pop.)



<a href="#">HP 2020 Target</a>				<= 103.4
--------------------------------	--	--	--	----------

Data Source: Centers for Disease Control and Prevention, National Vital Statistics System. Accessed via CDC WONDER. 2010-14. Source geography: County

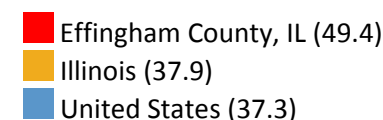
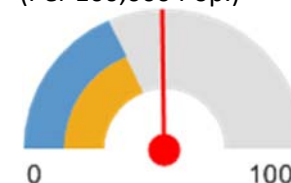


#### 4.16 Stroke Mortality

Report Area	Total Population	Average Annual Deaths, 2010-2014	Crude Death Rate (Per 100,000 Pop.)	Age-Adjusted Death Rate (Per 100,000 Pop.)
Effingham County, IL	34,301	22	64.14	49.4
Illinois	12,867,528	5,368	41.72	37.9
United States	313,836,267	129,754	41.34	37.3
<a href="#">HP 2020 Target</a>				<= 33.8

Data Source: Centers for Disease Control and Prevention, National Vital Statistics System. Accessed via CDC WONDER. 2010-14. Source geography: County

Stroke Mortality, Age-Adjusted Death Rate (Per 100,000 Pop.)



### Section 4. Chronic Disease Indicators

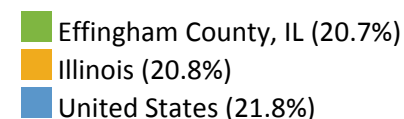
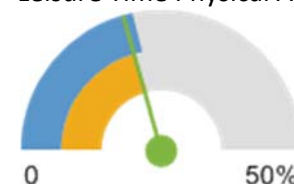
#### Health Behaviors:

Table 4.17 Physical Inactivity

Report Area	Total Population Age 20	Population with no Leisure Time Physical Activity	Percent Population with no Leisure Time Physical Activity
Effingham County, IL	25,333	5,548	20.7%
Illinois	9,516,375	2,020,399	20.8%
United States	234,207,619	52,147,893	21.8%

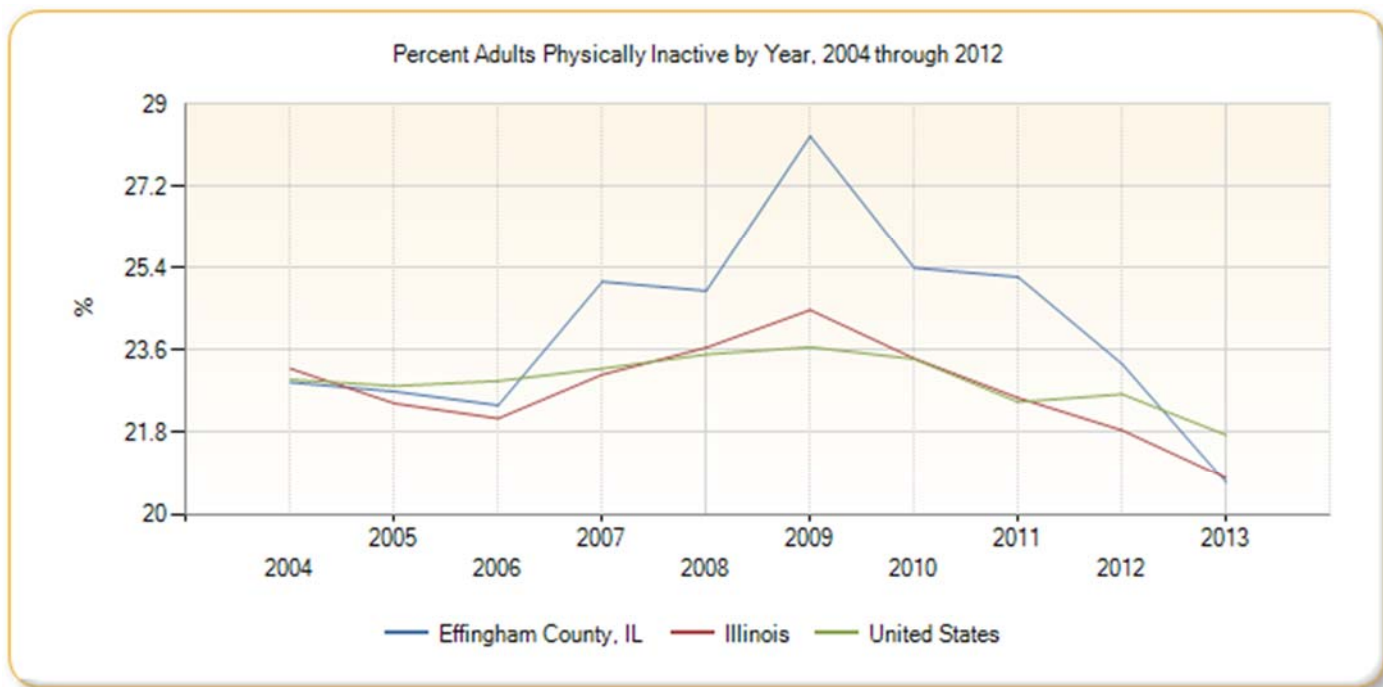
Data Source: Centers for Disease Control and Prevention, National Center for Chronic Disease Prevention and Health Promotion. 2013. Source geography: County

Percent Population with no Leisure Time Physical Activity



Within Effingham County, 5,548 or 20.7% of adults aged 20 and older self-report no leisure time for activity, based on the question: "During the past month, other than your regular job, did you participate in any physical activities or exercises such as running, calisthenics, golf, gardening, or walking for exercise?" There has been a decreasing trend since 2009.

Figure 4.2 Physical Inactivity Trend



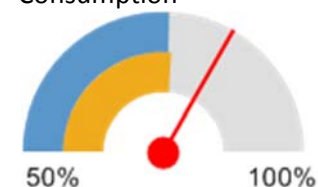
Data Source: Centers for Disease Control and Prevention, National Center for Chronic Disease Prevention and Health Promotion. 2013. Source geography: County

#### Section 4. Chronic Disease Indicators

**Table 4.18 Fruit and Vegetable Consumption**

Report Area	Total Population (Age 18 )	Total Adults with Inadequate Fruit / Vegetable Consumption	Percent Adults with Inadequate Fruit / Vegetable Consumption
Report Area	32,947	21,244	83.3%
Effingham County, IL	25,503	21,244	83.3%
Illinois	9,591,923	7,318,637	76.3%
United States	227,279,010	171,972,118	75.7%

Percent Adults with Inadequate Fruit / Vegetable Consumption



■ Report Area (83.3%)  
 ■ Illinois (76.3%)  
 ■ United States (75.7%)

Data Source: Centers for Disease Control and Prevention, Behavioral Risk Factor Surveillance System. Accessed via the Health Indicators Warehouse. US Department of Health Human Services, Health Indicators Warehouse. 2005-09. Source geography: County

In Effingham County an estimated 21,244, or 83.3% of adults over the age of 18 are consuming less than 5 servings of fruits and vegetables each day.

**Table 4.19 Adult Smoking (2015)**

Report Area	Percentage of Adults who are Current Smokers
-------------	--

Effingham County	15%
Illinois	<b>15%</b>
Top U.S. Performers	<b>14%</b>

Data source: County Health Rankings, modeling based on BRFSS data. 2015

The prevalence of tobacco smokers is the same in Effingham County as Illinois (15%). Top performing counties in the United States have 14% current adult smokers. The data for this indicator is based on a new modeling method by *County Health Rankings* and cannot be compared to other years. In Effingham County, less than half of smokers in 2011-2012, tried to quit within the year, compared to 60% of tobacco smokers in the United States and 61% in Illinois.

**Table 4.20 Tobacco Usage – Quit Attempts**

Report Area	Survey Population (Smokers Age 18 )	Total Smokers with Quit Attempt in Past 12 Months	Percent Smokers with Quit Attempt in Past 12 Months
Report Area	6,681	3,079	46.09%
Effingham County, IL	6,681	3,079	46.08%
Illinois	1,903,115	1,164,973	61.21%
United States	45,526,654	27,323,073	60.02%

Data Source: Centers for Disease Control and Prevention, Behavioral Risk Factor Surveillance System. Additional data analysis by CARES. 2011-12. Source geography: County

Percent Smokers with Quit Attempt in Past 12 Months



■ Report Area (46.09%)  
■ Illinois (61.21%)  
■ United States (60.02%)

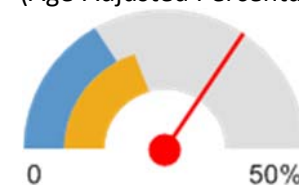
## Section 4. Chronic Disease Indicators

**Table 4.21 Alcohol Consumption**

Report Area	Total Population Age 18	Estimated Adults Drinking Excessively	Estimated Adults Drinking Excessively (Crude Percentage)	Estimated Adults Drinking Excessively (Age-Adjusted Percentage)
Effingham County, IL	25,670	7,983	31.1%	34.4%
Illinois	9,654,603	1,930,921	20%	20.4%
United States	232,556,016	38,248,349	16.4%	16.9%

Data Source: Centers for Disease Control and Prevention, Behavioral Risk Factor Surveillance System. Accessed via the Health Indicators Warehouse. US Department of Health Human Services, Health Indicators Warehouse. 2006-12. Source geography: County

Estimated Adults Drinking Excessively (Age-Adjusted Percentage)



■ Effingham County, IL (34.4%)  
■ Illinois (20.4%)  
■ United States (16.9%)

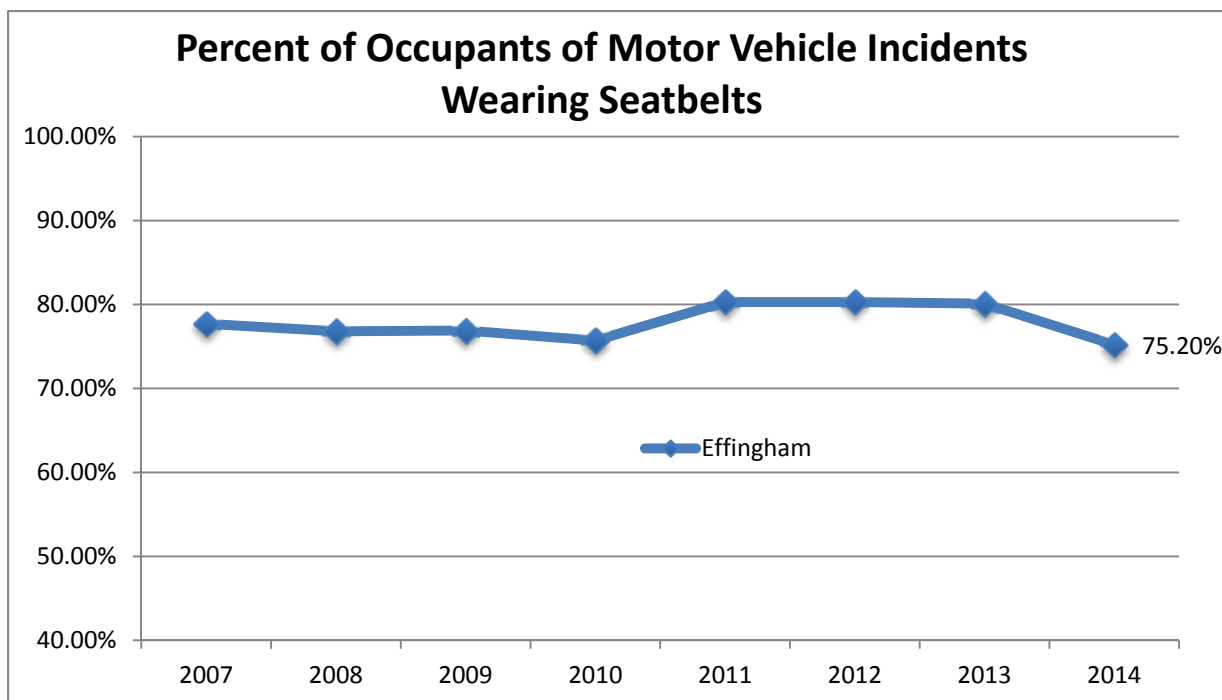
This indicator reports the percentage of adults aged 18 and older who self-report heavy alcohol consumption (defined as more than two drinks per day on average for men and one drink per day on average for women). In Effingham County, approximately 34.4% of adults drink excessively compared to 20.4% in Illinois and 16.9% in the United States.



**Figure 4.3 Seat Belt Use**

Illinois Department of Transportation, Division of Traffic Safety, Crash Report Database

This indicator reports the percentage of occupants of motor vehicle incidents wearing seatbelts. In Effingham County,

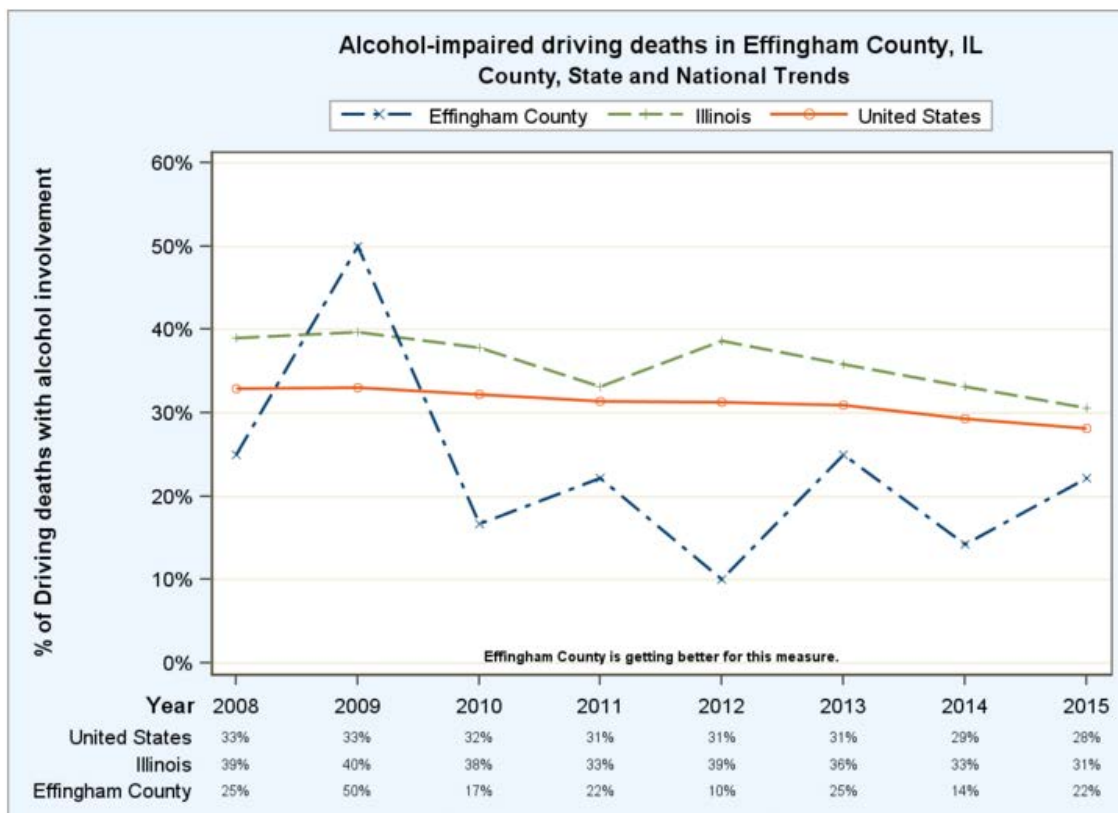


75.20% of motor vehicle accident occupants were wearing seatbelts. For the entire state of Illinois in 2014, in fatal motor vehicle accidents, only 56.1% were wearing a

seatbelt.

#### Section 4. Chronic Disease Indicators

**Figure 4.5 Effingham County Alcohol Impaired Driving Deaths**

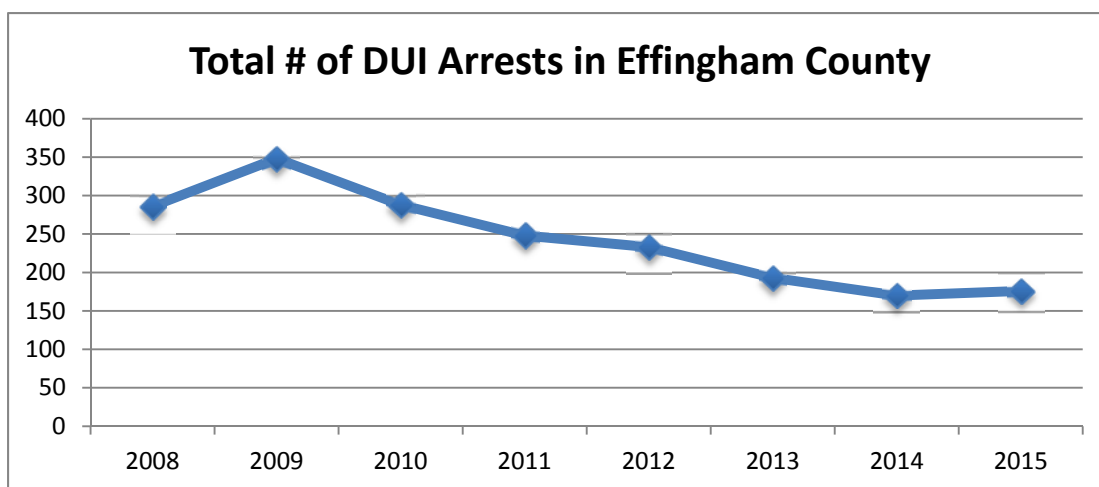


Data  
County  
Rankings,

source:  
Health  
Fatality

Analysis Reporting System

**Figure 4.6 Effingham County Arrests of Adult Drivers under the Influence of Alcohol**

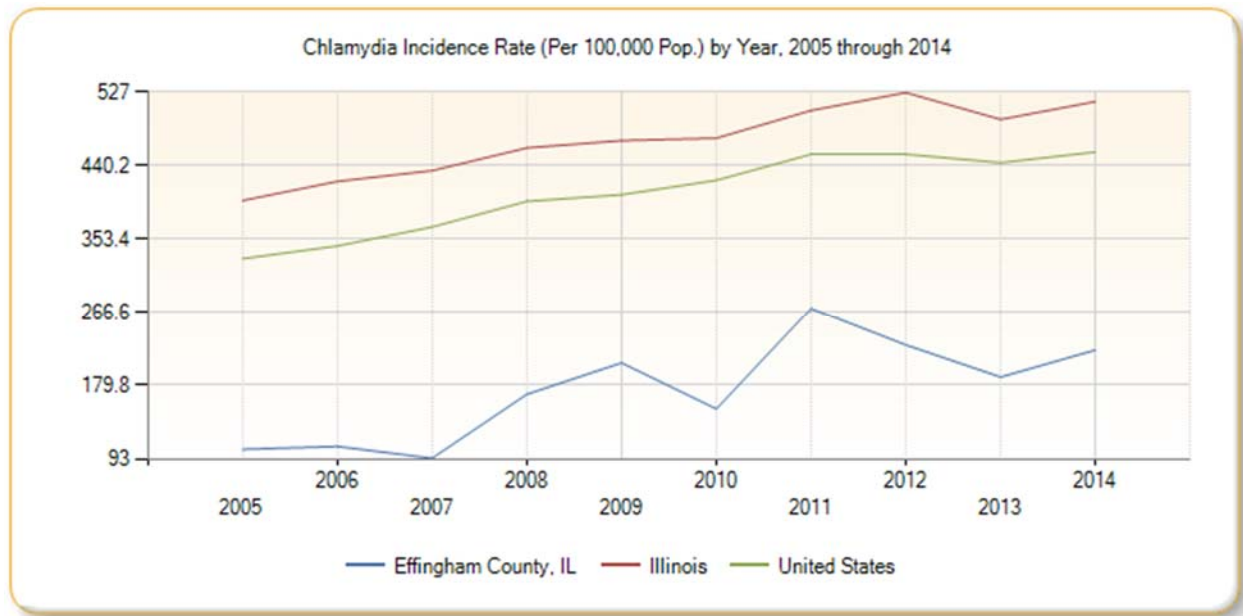


Data source: Illinois Secretary of State; IQUERY

In 2015, 22% of driving deaths in Effingham County involved alcohol. In Illinois, 31% of driving deaths involved alcohol, which has been on a decreasing trend since 2008. The overall trend since 2008 in Effingham County has been a decrease in alcohol related driving deaths. Since 2008, Effingham County has seen a decreasing trend in the number of adult drivers arrested under the influence of alcohol (DUI).

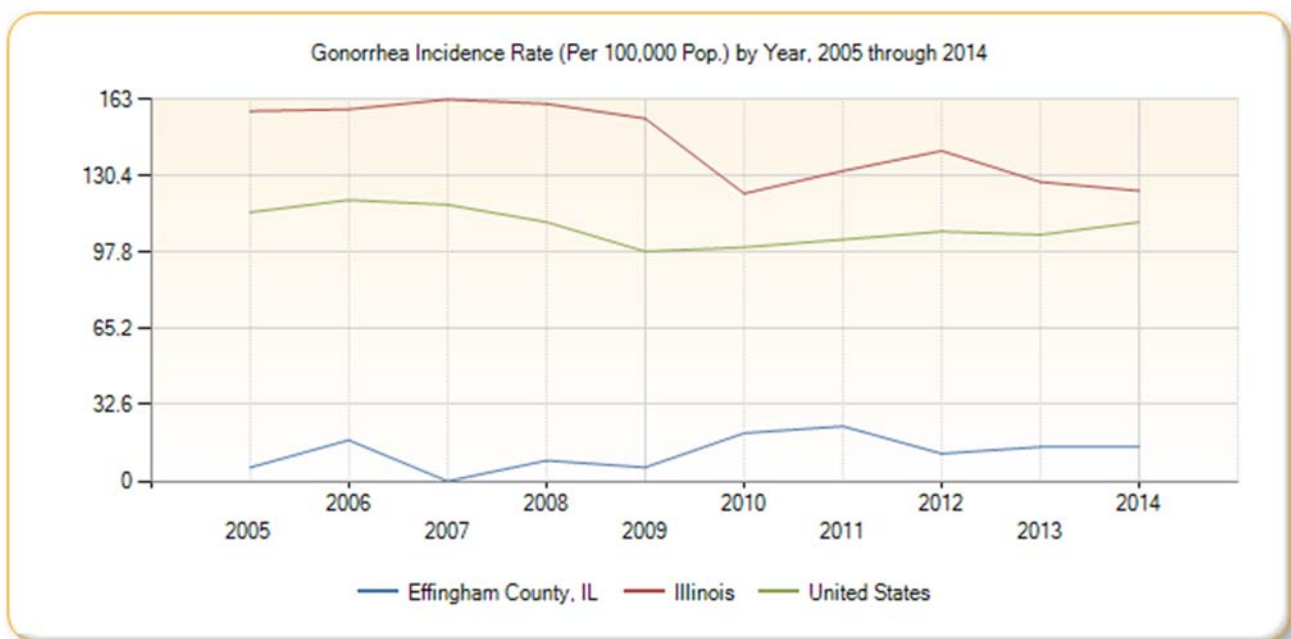
## Section 5. Infectious Disease Indicators

**Figure 5.1 STI Rate- Chlamydia Trend**



Chlamydia rates in Effingham County are climbing to meet the state and national rates. Gonorrhea rates have remained low, far below the state and national rates.

**Figure 5.2 STI Rate – Gonorrhea Trend**



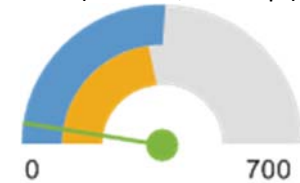
## Section 5. Infectious Disease Indicators

**Table 5.1 HIV Prevalence**

Report Area	Population Age 13	Population with HIV / AIDS	Population with HIV / AIDS, Rate (Per 100,000 Pop.)
Effingham County, IL	28,447	10	35.15
Illinois	10,739,418	34,681	322.93
United States	263,765,822	931,526	353.16

Data Source: US Department of Health Human Services, Health Indicators Warehouse. Centers for Disease Control and Prevention, National Center for HIV/AIDS, Viral Hepatitis, STD, and TB Prevention. 2013. Source geography: County

Population with HIV / AIDS, Rate (Per 100,000 Pop.)



Report Area (35.15)  
Illinois (322.93)  
United States (353.16)

HIV/AIDS rates are much lower in Effingham County than in Illinois or the United States. This indicator reports prevalence rate of HIV per 100,000 population. This indicator is relevant because HIV is a life-threatening communicable disease that disproportionately affects minority populations and may also indicate the prevalence of unsafe sex practices. In Effingham County, 91.20% of adults (aged 18 – 70) self-report that they have never been screened for HIV (Data source: Behavioral Risk Factor Surveillance System, 2011-2012).

**Table 5.2: Cases & Rates of Syphilis, 2011-2015**

	Cases					Rates				
Rates are per 100,000 population.										
Early Syphilis										
COUNTY	2011	2012	2013	2014	2015	2011	2012	2013	2014	2015
EFFINGHAM	0	2	0	0	0	0	5.8	0	0	0
TOTAL ILLINOIS	1462	1500	1607	1682	1,974	10.6	10.9	12.5	13.1	15.4
Total Ill. Excluding Chicago	393	402	12.5	493	622	3.5	3.6	3.9	4.9	6.1

Source: Illinois Department of Public Health, State of IL Data Portal, STD Counts by County

Early syphilis rates have been consistently rising in Illinois (including when Chicago is excluded). Effingham County had 2 early syphilis cases between 2011 and 2015. And, 2 cases of Tuberculosis in Effingham County between 2011 and 2015.

**Table 5.3: Clay County Tuberculosis Cases**

County	2011	2012	2013	2014	2015
Effingham County	0	1	0	0	1
Jasper County	0	0	0	0	0
Southern IL Region	11	18	16	15	26

Source: IDPH, Tuberculosis Cases by Illinois County of Residence

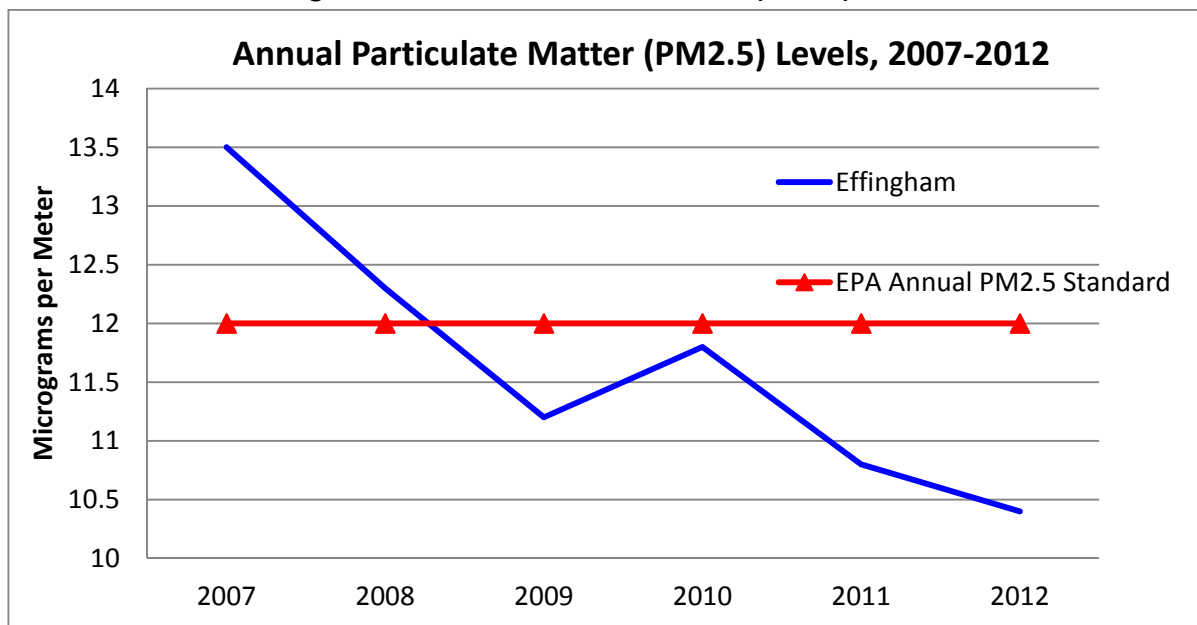
**Table 5.4 Communicable Disease Case Counts (2011-2015)**

COUNTY	Cases				
	2011	2012	2013	2014	2015
	<b>Cryptosporidiosis</b>				
Effingham County	1	1	3	1	1
TOTAL ILLINOIS	213	173	266	158	240
	<b>Hepatitis C, chronic</b>				
Effingham County	11	13	10	11	32
TOTAL ILLINOIS	8,439	7,673	6,819	8,933	8,696
	<b>Histoplasmosis</b>				
Effingham County	1	1	0	0	0
TOTAL ILLINOIS	173	133	211	195	211
	<b>Influenza with ICU Hospitalization</b>				
Effingham County	0	0	2	13	2
TOTAL ILLINOIS	305	553	680	1,558	482
	<b>Meningococcal</b>				
Effingham County	0	1	0	0	0
TOTAL ILLINOIS	35	17	10	12	15
	<b>Mumps</b>				
Effingham County	0	0	0	0	1
TOTAL ILLINOIS	78	32	26	142	430
	<b>Pertussis</b>				
Effingham County	0	1	0	1	0
TOTAL ILLINOIS	1,509	2,026	785	764	718
	<b>Salmonellosis</b>				
Effingham County	2	17	4	5	5
TOTAL ILLINOIS	1,694	1,970	1,772	1,771	1,829
	<b>E.Coli</b>				
Effingham County	5	2	2	4	5
TOTAL ILLINOIS	241	218	279	195	186
	<b>Varicella (Chicken Pox)</b>				
Effingham County	0	0	1	0	1
TOTAL ILLINOIS	881	898	731	596	443
	<b>West Nile Virus</b>				
Effingham County	0	0	0	0	0
TOTAL ILLINOIS	34	290	117	45	77

Data Source: Illinois Department of Public Health, Communicable Disease Control Section, via, I-QUERY

In the Illinois Behavioral Risk Factor Surveillance System Survey conducted in 2011, 33.5% of participants in Effingham County had a flu vaccine in the past year, and 29.7% had a pneumonia vaccine in their lifetime.

Figure 6.1: Annual Particulate Matter (PM2.5) Levels



Source: US Environmental Protection Agency

In 2013, the US Environmental Protection Standard for particulate matter in the air was lowered from 15 parts per meter, to 12ppm. This graph shows that in 2007 and 2008 Effingham County's air quality would have been worse than the 12ppm standard, but below the 15ppm standard. Since 2009, air quality in Effingham County has remained lower than the standard.

Table 6.1 High Heat Index Days

Report Area	Total Weather Observations	Average Heat Index Value	Observations with High Heat Index Values	Observations with High Heat Index Values, Percentage
Effingham County, IL	2,920	96.7	296	10.14%
Illinois	362,810	95.8	31,697	8.7%
United States	19,094,610	91.82	897,155	4.7%

Data Source: National Oceanic and Atmospheric Administration, North America Land Data Assimilation System (NLDAS) . Accessed via CDC WONDER. Additional data analysis by CARES. 2014. Source geography: County

Percentage of Weather Observations with High Heat Index Values: %



■ Effingham County, IL (10.14%)  
■ Illinois (8.7%)  
■ United States (4.7%)

High heat index events are considered when temperature exceeds 103°F with humidity. The higher the heat index, the hotter the weather feels, since sweat does not readily evaporate and cool the skin. This is an important measure for estimating the risk to outside workers for heat exhaustion. Effingham County had 296 days of high heat index from 1974 to 2011. This is higher than State and National

## Section 6. Environmental, Occupational, and Injury Control Indicators

**Built Environment:** the Center for Disease Control and Prevention defines the built environment as “including all of the physical parts of where we live and work (e.g. homes, buildings, streets, open spaces and infrastructure.” The built environment can influence community health and individual behaviors such as physical activity and healthy eating.

**Access to Parks:** In Effingham County (2010), 28% of the population lived within ½ mile from a park. The State benchmark for this measure is 59%. (Data source: Centers for Disease Control and Prevention. Healthy Community Design Initiative and Geospatial Research Analysis and Services Program. Accessed from Environmental Public Health Tracking Network. 2010)

**Proximity to Highways:** Traffic-related air pollution is a major cause of unhealthy air quality. In Effingham County (2010), 3.5% of the population lived within 150meters (2 blocks) of a highway. (Data source: Centers for Disease Control and Prevention. Environmental Public Health Tracking Network. Community Design.)

**Table 6.2 Access to Fast Food Restaurants**

Report Area	Total Population	Number of Establishments	Establishments, Rate per 100,000 Population
Effingham County, IL	34,242	34	99.29
Illinois	12,830,632	9,643	75.2
United States	312,732,537	228,677	73.1

Data Source: US Census Bureau, County Business Patterns. Additional data analysis by CARES. 2014. Source geography: County

Fast Food Restaurants, Rate (Per 100,000 Population)



■ Effingham County, IL (99.29)  
■ Illinois (75.2)  
■ United States (73.1)

This indicator reports the number of fast food restaurants per 100,000 population. This indicator is relevant because it provides a measure of healthy food access and environmental influences on dietary behaviors. Effingham has significantly more fast food restaurants per 100,000 population than the Illinois and National benchmarks.

**Table 6.3 Access to Liquor Stores**

Report Area	Total Population	Number of Establishments	Establishments, Rate per 100,000 Population
Effingham County, IL	34,242	8	23.36
Illinois	12,830,632	1,309	10.2
United States	312,732,537	33,204	10.6

Data Source: US Census Bureau, County Business Patterns. Additional data analysis by CARES. 2014. Source geography: County

Liquor Stores, Rate (Per 100,000 Population)



■ Effingham County, IL (23.36)  
■ Illinois (10.2)  
■ United States (10.6)

This indicator reports the number of beer, wine, and liquor stores per 100,000 population, as defined by North American Industry Classification System (NAICS) Code 445310. This indicator is relevant because it provides a measure of healthy food access and environmental influences on dietary behaviors.

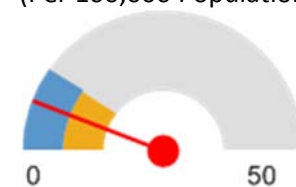
## Section 6. Environmental, Occupational, and Injury Control Indicators

**Table 6.4 Access to Recreation and Fitness Facilities**

Report Area	Total Population	Number of Establishments	Establishments, Rate per 100,000 Population
Effingham County, IL	34,242	2	5.84
Illinois	12,830,632	1,325	10.3
United States	312,732,537	31,715	10.1

Data Source: US Census Bureau, County Business Patterns. Additional data analysis by CARES. 2014. Source geography: County

Recreation and Fitness Facilities, Rate (Per 100,000 Population)



■ Effingham County, IL (5.84)  
 ■ Illinois (10.3)  
 ■ United States (10.1)

This indicator reports the number per 100,000 population of recreation and fitness facilities as defined by North American Industry Classification System (NAICS) Code 713940. This indicator is relevant because access to recreation and fitness facilities encourages physical activity and other healthy behaviors.

**Table 6.5 Substandard Housing**

Report Area	Total Occupied Housing Units	Occupied Housing Units with One or More Substandard Conditions	Percent Occupied Housing Units with One or More Substandard Conditions
Effingham County, IL	13,330	2,596	19.47%
Illinois	4,786,388	1,643,898	34.35%
United States	116,926,305	40,585,236	34.71%

Data Source: US Census Bureau, American Community Survey. 2011-15. Source geography: Tract

Percent Occupied Housing Units with One or More Substandard Conditions

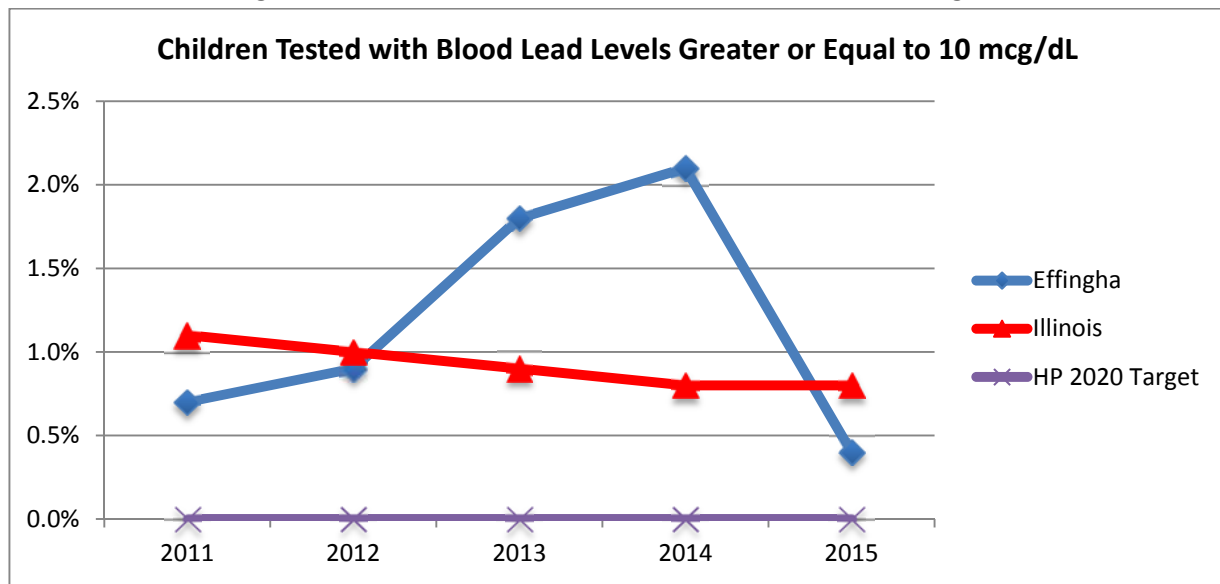


■ Effingham County, IL (19.47%)  
 ■ Illinois (34.35%)  
 ■ United States (34.71%)

This indicator reports the number and percentage of owner- and renter-occupied housing units having at least one of the following conditions: 1) lacking complete plumbing facilities, 2) lacking complete kitchen facilities, 3) with 1.01 or more occupants per room, 4) selected monthly owner costs as a percentage of household income greater than 30%, and 5) gross rent as a percentage of household income greater than 30%



Figure 6.2: Children Tested with Blood Lead Levels  $\geq 10$  mcg/dL



Source: IDPH, Illinois Lead Poisoning Surveillance Report, 2011-2015

There is an overall downward trend in Illinois in the percent of children tested with blood lead levels  $\geq 10$  mcg/dL. Effingham County had an increase in 2012-2014 in children with blood lead levels  $\geq 10$  mcg/dL. The Healthy People 2020 goal is to have zero percent of children tested with blood lead levels  $\geq 10$  mcg/dL.

## Injury Indicators

**Violent Crimes:** In Effingham County, between 2012-2014, there were 50 violent crimes. This is a rate of 145 per 100,000 populations. The rate in Effingham County is far below the Illinois benchmark of 388 per 100,000 populations.

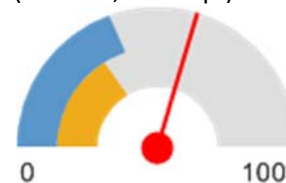
**Table 6. 6 Number of Intentional self-harm (suicide) deaths, 2010-2014**

	2010	2011	2012	2013	2014
Effingham County	0	0	4	3	1

**Table 6.7 Accidental Death Rate**

Report Area	Total Population	Average Annual Deaths, 2010-2014	Crude Death Rate (Per 100,000 Pop.)	Age-Adjusted Death Rate (Per 100,000 Pop.)
Effingham County, IL	34,301	22	65.3	59.4
Illinois	12,867,528	4,361	33.89	32.7
United States	313,836,267	128,295	40.88	39.2
<a href="#">HP 2020 Target</a>				<= 36.0

Unintentional Injury (Accident) Mortality, Age-Adjusted Death Rate (Per 100,000 Pop.)



■ Effingham County, IL (59.4)  
■ Illinois (32.7)  
■ United States (39.2)

Data Source: Centers for Disease Control and Prevention, National Vital Statistics System. Accessed via CDC WONDER. 2010-14. Source geography: County

This indicator reports the rate of death due to unintentional injury (accident) per 100,000 population. Figures are reported as crude rates, and as rates age-adjusted to year 2000 standard. This indicator is relevant because accidents are a leading cause of death in the U.S. The accidental death rate in Effingham County is higher than the Illinois, U.S. and Healthy People 2020 Target.

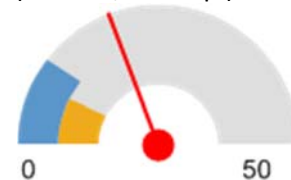
## Section 6. Environmental, Occupational, and Injury Control Indicators

**Table 6.8 Motor Vehicle Crash Death Rate**

Report Area	Total Population	Average Annual Deaths, 2010-2014	Crude Death Rate (Per 100,000 Pop.)	Age-Adjusted Death Rate (Per 100,000 Pop.)
Effingham County, IL	34,301	6	18.08	19.3
Illinois	12,867,528	1,028	7.99	7.8
United States	313,836,267	33,977	10.83	10.6

Data Source: Centers for Disease Control and Prevention, National Vital Statistics System. Accessed via CDC WONDER. 2010-14. Source geography: County

Motor Vehicle Crash Death, Age-Adjusted Death Rate (Per 100,000 Pop.)



■ Effingham County, IL (19.3)  
 ■ Illinois (7.8)  
 ■ United States (10.6)

This indicator reports the rate of death due to motor vehicle crashes per 100,000 population, which include collisions with another motor vehicle, a nonmotorist, a fixed object, and a non-fixed object, an overturn, and any other non-collision. This indicator is relevant because motor vehicle crash deaths are preventable and they are a cause of premature death

**Table 6.9 Pedestrian Motor Vehicle Deaths**

Report Area	Total Population (2010)	Total Pedestrian Deaths, 2011-2015	Average Annual Deaths, Rate per 100,000 Pop.
Effingham County, IL	34,242	5	4.9
Illinois	12,830,632	827	2.1
United States	312,732,537	28,832	3.1
<a href="#">HP 2020 Target</a>			<= 1.3

Data Source: US Department of Transportation, National Highway Traffic Safety Administration, Fatality Analysis Reporting System. 2011-2015. Source geography: County

Pedestrian Motor Vehicle Mortality, Crude Death Rate (Per 100,000 Pop.)



■ Effingham County, IL (4.9)  
 ■ Illinois (2.1)  
 ■ United States (3.1)

This indicator reports the crude rate of pedestrians killed by motor vehicles per 100,000 population. This indicator is relevant because pedestrian-motor vehicle crash deaths are preventable and they are a cause of premature death.

## Section 7. Sentinel Events

**Table 7.1 Preventable Hospital Events**

Report Area	Total Medicare Part A Enrollees	Ambulatory Care Sensitive Condition Hospital Discharges	Ambulatory Care Sensitive Condition Discharge Rate
Effingham County, IL	5,050	286	56.8
Illinois	341,565	17,732	51.9
United States	29,649,023	1,479,545	49.9

Data Source: Dartmouth College Institute for Health Policy Clinical Practice, Dartmouth Atlas of Health Care. 2014. Source geography: County

Preventable Hospital Events, Age-Adjusted Discharge Rate (Per 1,000 Medicare Enrollees)



■ Effingham County, IL (56.8)  
■ Illinois (51.9)  
■ United States (49.9)

Sentinel indicators are for health conditions considered preventable or controllable with regular primary care. This indicator reports the discharge rate (per 1,000 Medicare enrollees) for conditions that are ambulatory care sensitive (ACS). ACS conditions include pneumonia, dehydration, asthma, diabetes, and other conditions which could have been prevented if adequate primary care resources were available and accessed by those patients. This indicator is relevant because analysis of ACS discharges allows demonstrating a possible “return on investment” from interventions that reduce admissions (for example, for uninsured or Medicaid patients) through better access to primary care resources.

**Figure 7.1 Preventable Hospital Events Trend**

